

Design Development

Groves Middle School

Port Neches Middle School

Port Neches – Groves High School

GROVES MS



November 13, 2007

PORT NECHES MS



PORT NECHES – GROVES HS



PROJECT TEAM

Port Neches – Groves ISD

Dr. Lani Randall

Marc Keith

Ken Cummings

Kyle Hooper

Dr. Mary Jane Moore

Frank Wilson

Superintendent

PN-G HS Principal

Groves MS Principal

Port Neches MS Principal

Secondary Curr. Coordinator

Director of Maintenance

SHW Group

Gary Blanton

Jennifer Henrikson

Bill Wadley

Dan Whalen

Ashad Satchu

J. Luis Del Valle

Managing Principal

Principal in Charge

Lead Designer – HS & Stadium

Lead Designer - PNMS

Lead Designer - GMS

Project Manager

Consultants

DBR Engineering Consultants

Brooks & Sparks

Millunzi & Associates

MEP Engineers

Civil Engineers

Food Service Consultant

Program Manager

LANWalton

Program Manager



**Port Neches – Groves Independent School District
GMS, PNMS, PNGHS Design Development**

SHWGROUP
ARCHITECTS | ENGINEERS | PLANNERS



Design Progress Status

- Completed Onsite Design though DD
 - Great involvement and input from PN-G staff
 - Board of Trustees
 - Administrators
 - Teachers
 - Code authorities & municipalities
- Looking for approval for DD
 - Next step will be to continue to develop the contract documents
 - Drawings
 - Specifications

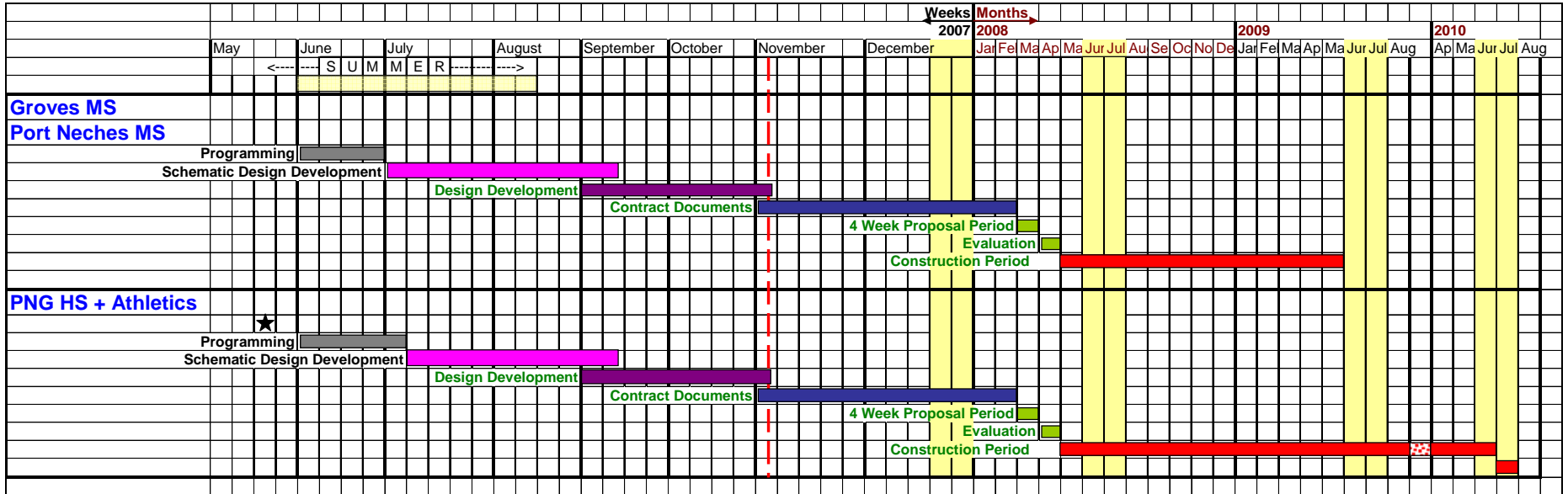


Port Neches – Groves Independent School District
GMS, PNMS, PNGHS Design Development

SHWGROUP
ARCHITECTS | ENGINEERS | PLANNERS



Project Schedule



- All projects remain on schedule!



Port Neches – Groves Independent School District
GMS, PNMS, PNGHS Design Development

Groves Middle School

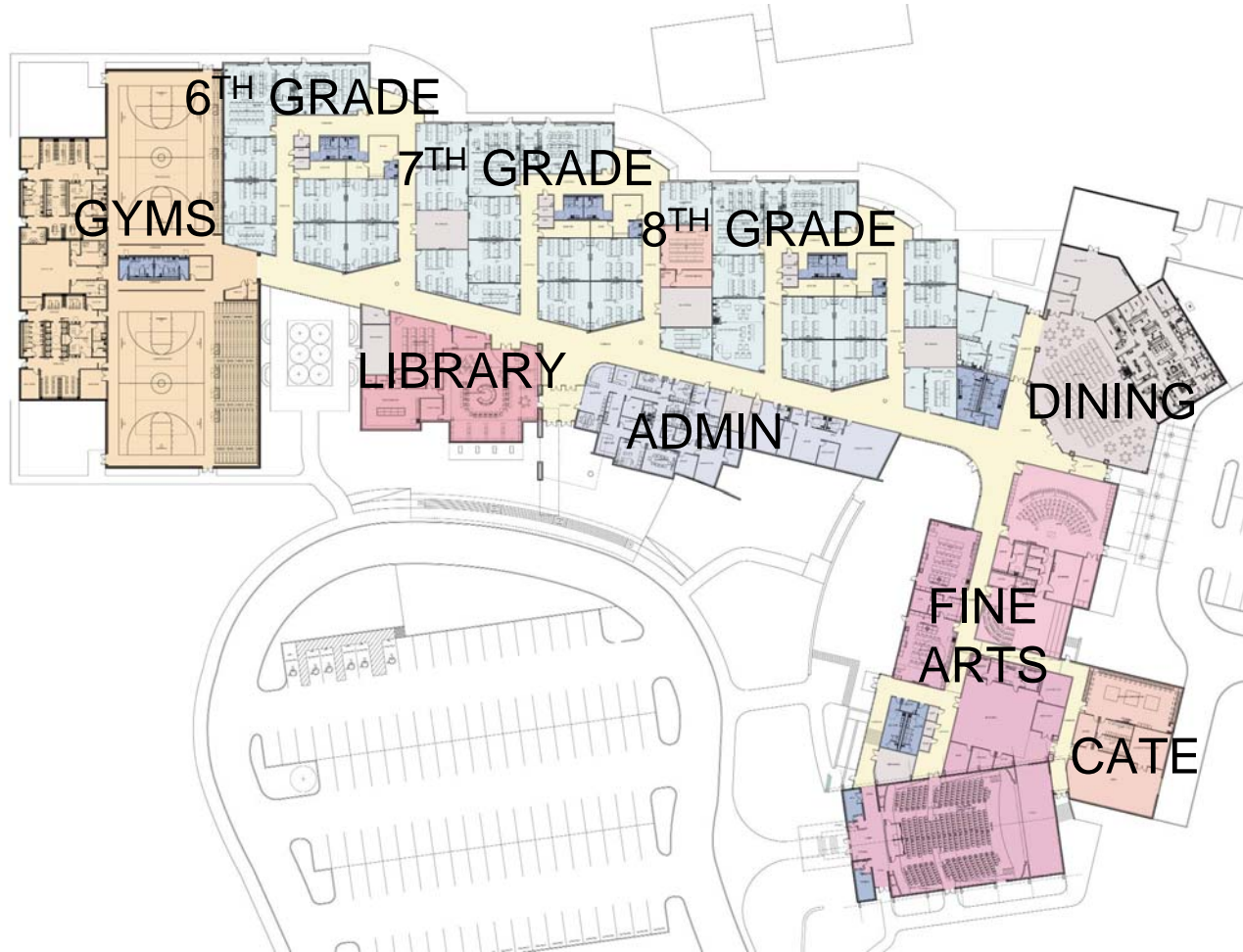


**Port Neches – Groves Independent School District
GMS, PNMS, PNGHS Design Development**

SHWGROUP
ARCHITECTS | ENGINEERS | PLANNERS



Groves Middle School

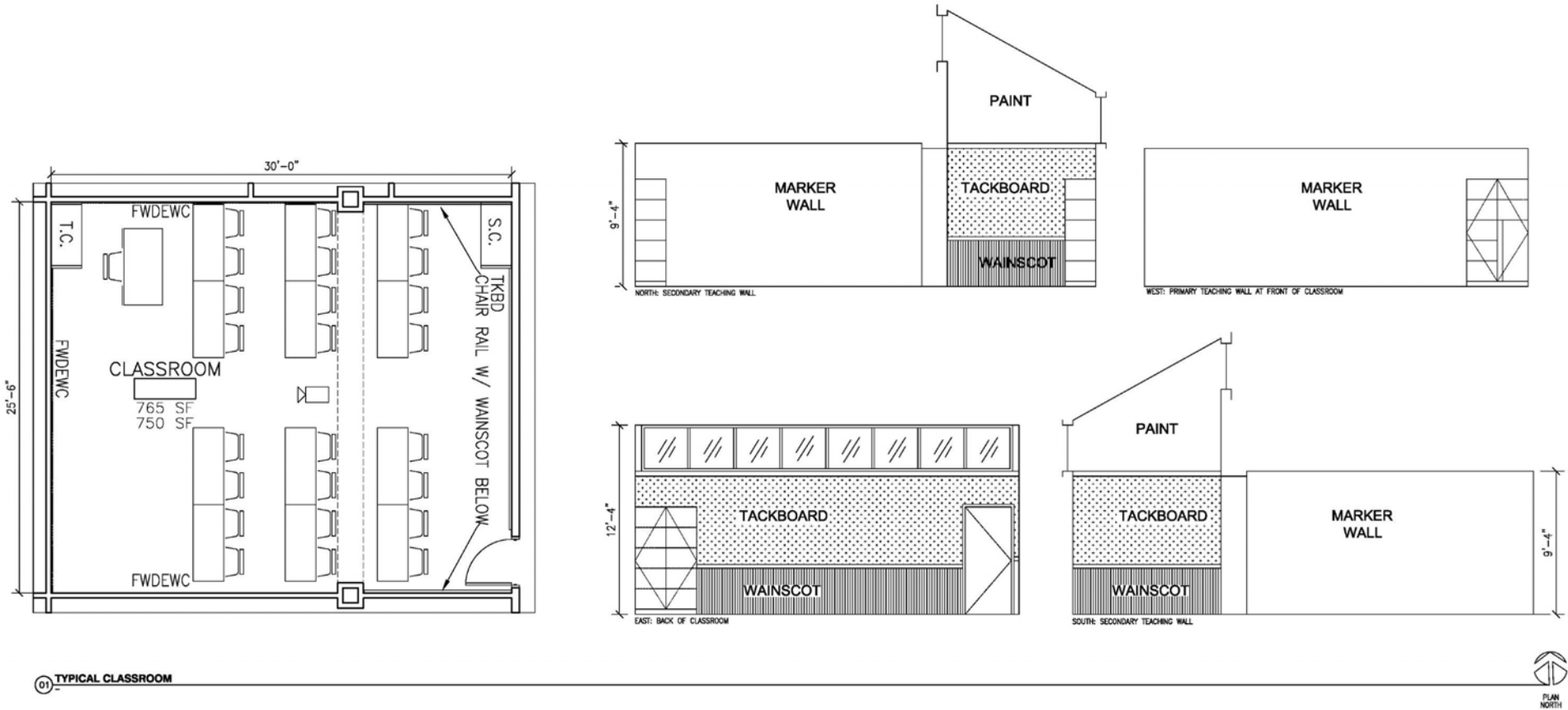


FLOOR PLAN

**Port Neches – Groves Independent School District
GMS, PNMS, PNGHS Design Development**



Groves Middle School



TYPICAL CLASSROOM

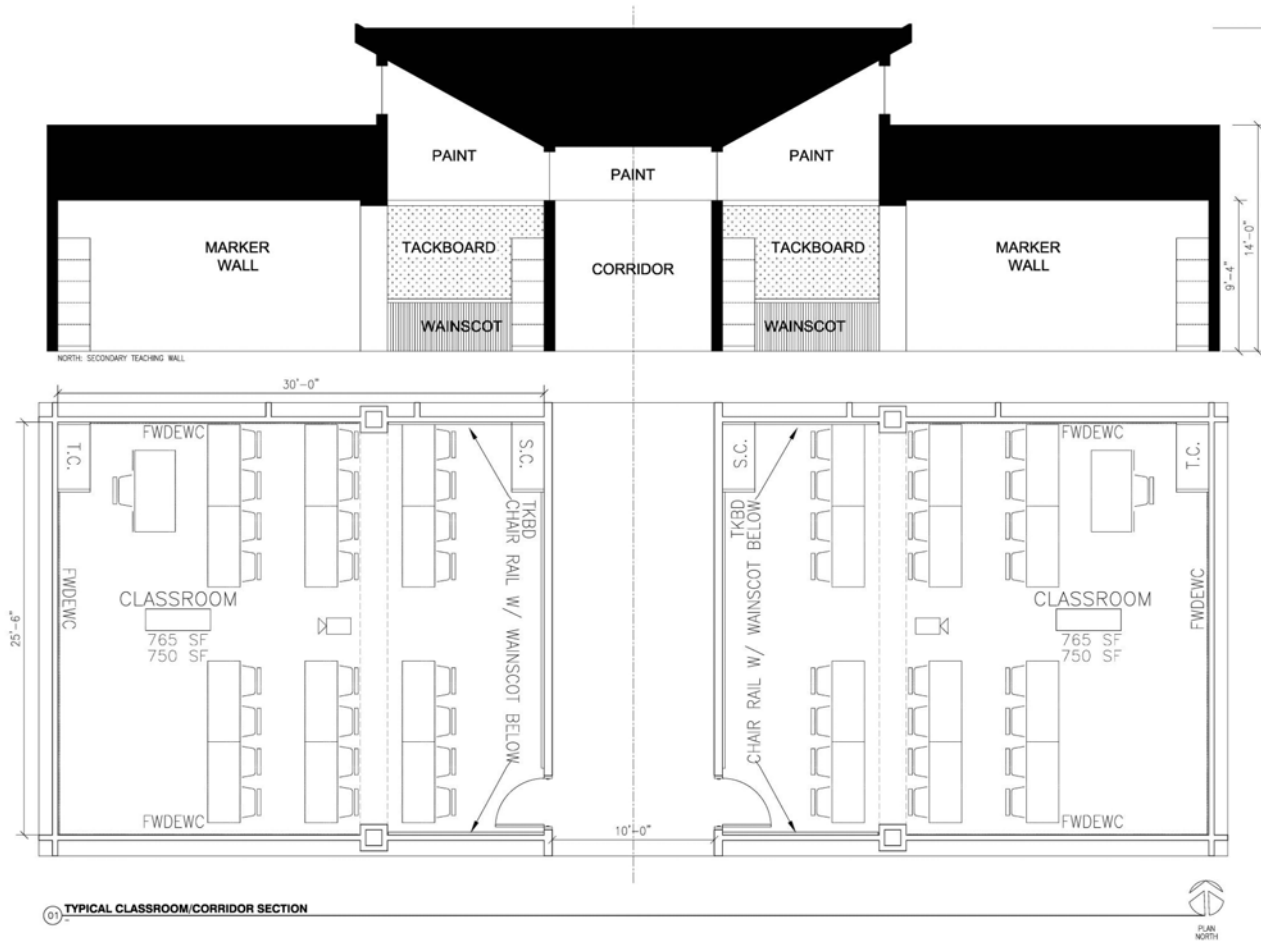


Port Neches – Groves Independent School District
GMS, PNMS, PNGHS Design Development

SHWGROUP
ARCHITECTS | ENGINEERS | PLANNERS



Groves Middle School



TYPICAL CLASSROOM
Port Neches – Groves Independent School District
GMS, PNMS, PNGHS Design Development

SHWGROUP
ARCHITECTS | ENGINEERS | PLANNERS



All Schools



SHARED PALETTE – MATERIALS AND COLORS

**Port Neches – Groves Independent School District
GMS, PNMS, PNGHS Design Development**



SHWGROUP
ARCHITECTS | ENGINEERS | PLANNERS



Groves Middle School



PALETTE – MATERIALS AND COLORS

**Port Neches – Groves Independent School District
GMS, PNMS, PNGHS Design Development**



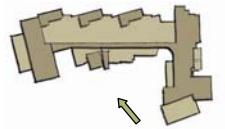
Groves Middle School



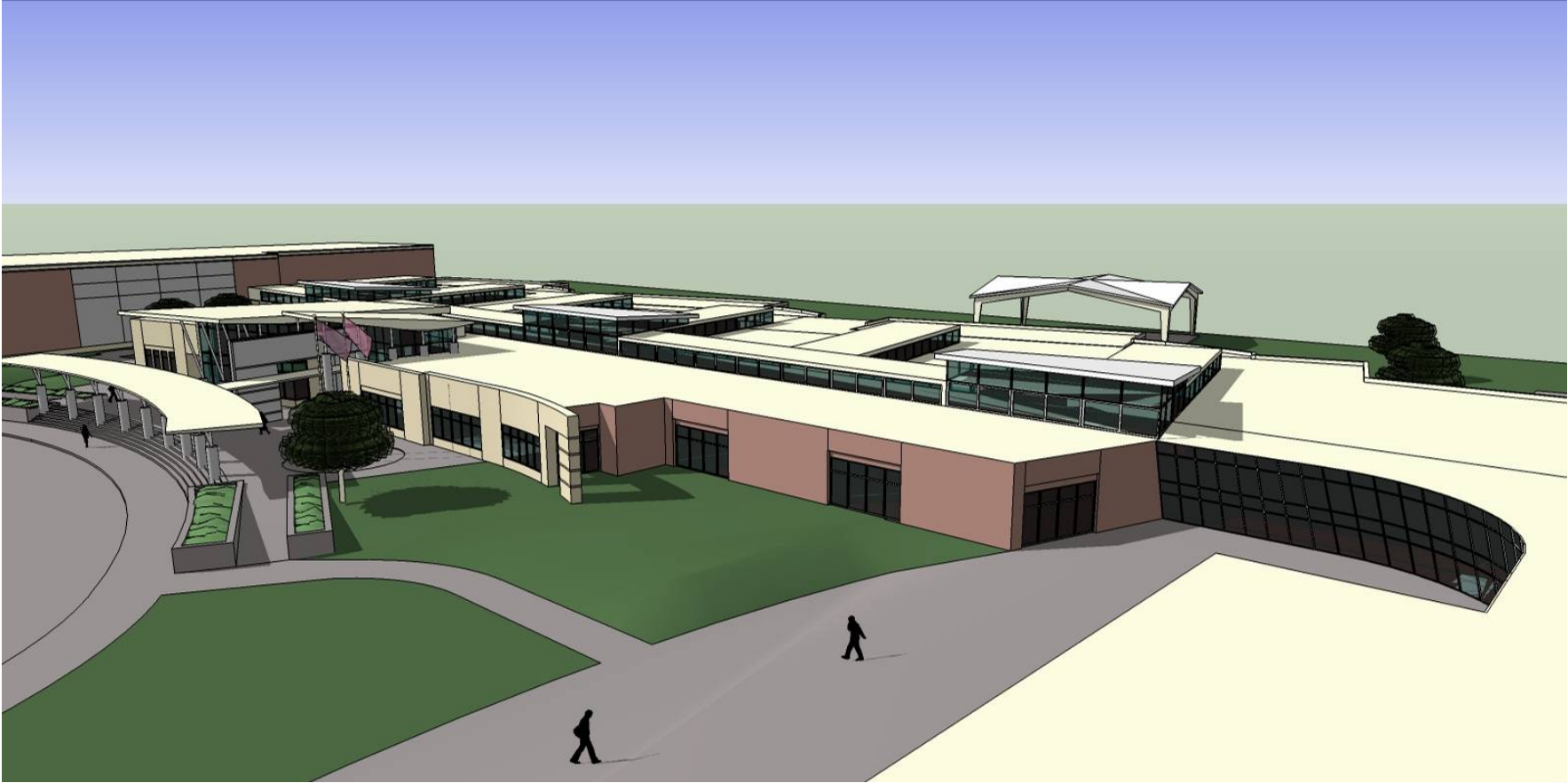
PERSPECTIVE – FRONT ENTRY



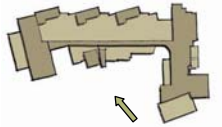
**Port Neches – Groves Independent School District
GMS, PNMS, PNGHS Design Development**



Groves Middle School



PERSPECTIVE – FRONT ENTRY



**Port Neches – Groves Independent School District
GMS, PNMS, PNGHS Design Development**

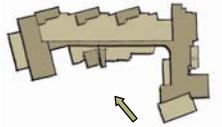
SHWGROUP
ARCHITECTS | ENGINEERS | PLANNERS



Groves Middle School



PERSPECTIVE – FROM WILSON

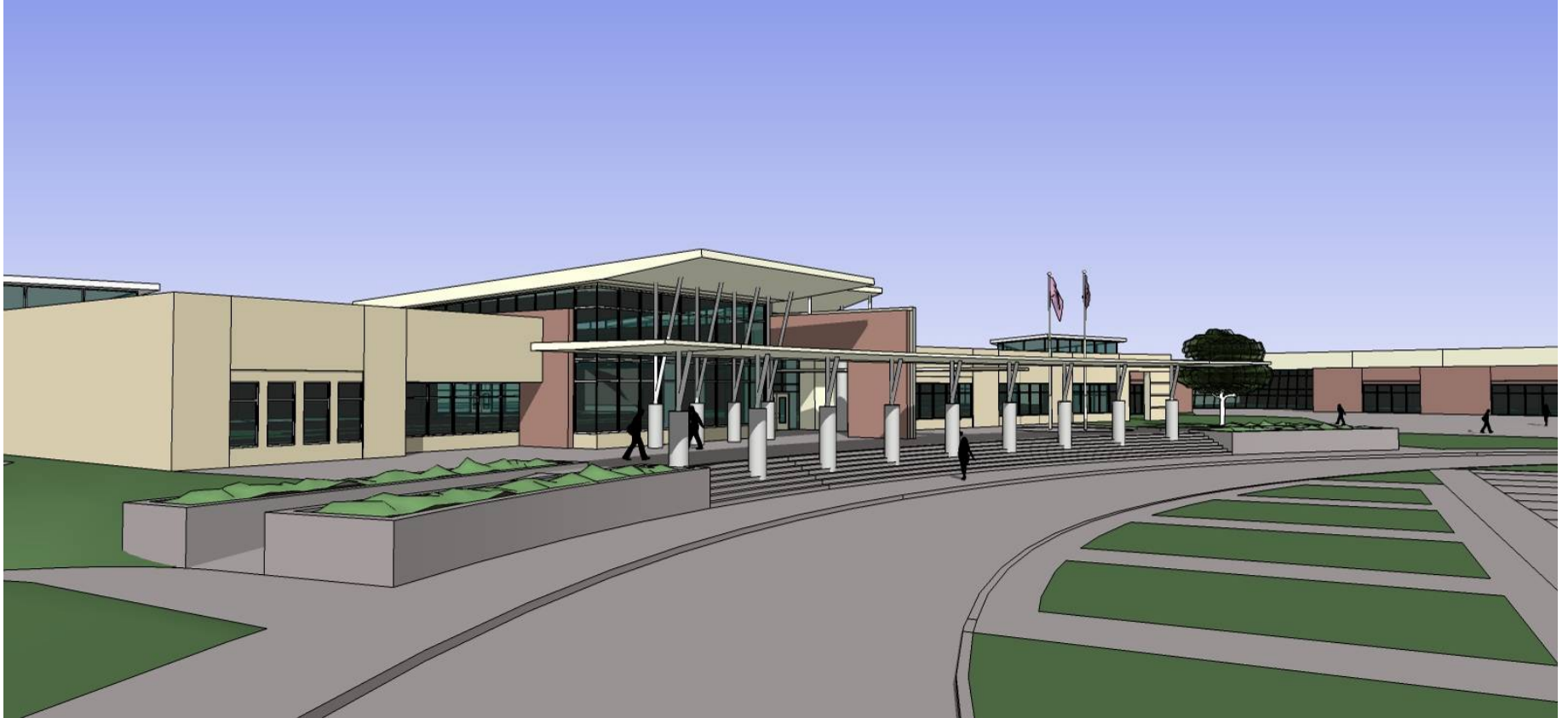


**Port Neches – Groves Independent School District
GMS, PNMS, PNGHS Design Development**

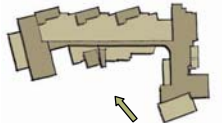
SHWGROUP
ARCHITECTS | ENGINEERS | PLANNERS



Groves Middle School



PERSPECTIVE – LIBRARY



**Port Neches – Groves Independent School District
GMS, PNMS, PNGHS Design Development**

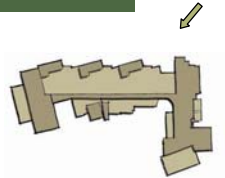
SHWGROUP
ARCHITECTS | ENGINEERS | PLANNERS



Groves Middle School



PERSPECTIVE – SCIENCE COURTYARDS

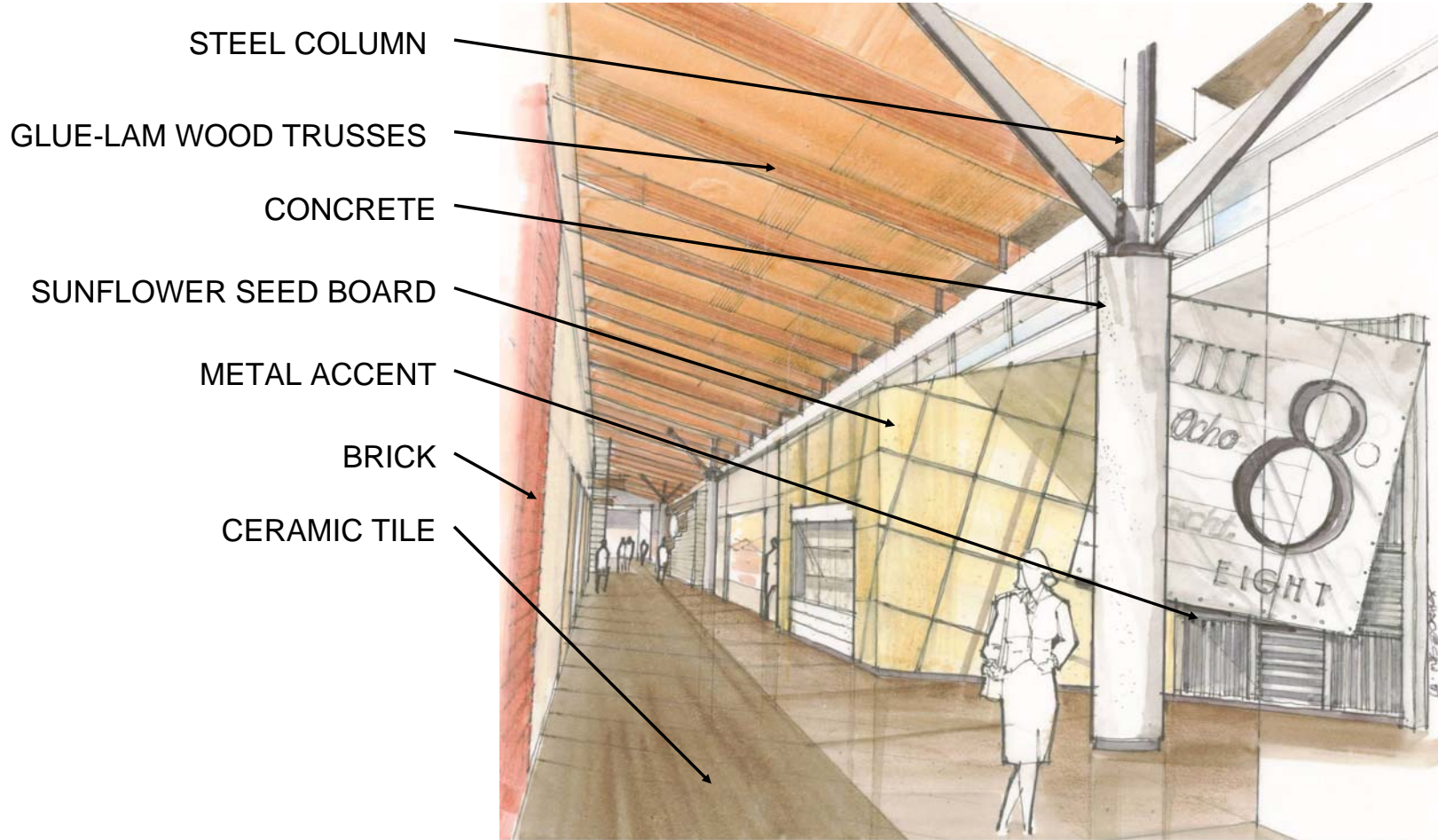


**Port Neches – Groves Independent School District
GMS, PNMS, PNGHS Design Development**

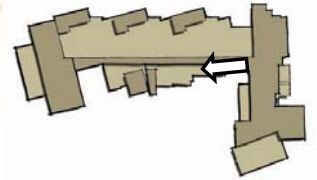
SHWGROUP
ARCHITECTS | ENGINEERS | PLANNERS



Groves Middle School



PERSPECTIVE – “MAIN STREET”



**Port Neches – Groves Independent School District
GMS, PNMS, PNGHS Design Development**

SHWGROUP
ARCHITECTS | ENGINEERS | PLANNERS



Groves Middle School

GLUE-LAM WOOD TRUSSES

PAINTED DRYWALL

WOOD

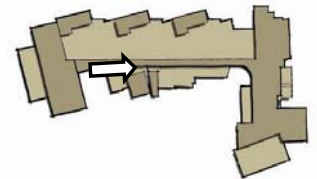
CONCRETE MASONRY

METAL WAINSCOTING

CERAMIC TILE



PERSPECTIVE – “MAIN STREET”



**Port Neches – Groves Independent School District
GMS, PNMS, PNGHS Design Development**

SHWGROUP
ARCHITECTS | ENGINEERS | PLANNERS



Groves Middle School



THROUGH SECTION – MAIN STREET



**Port Neches – Groves Independent School District
GMS, PNMS, PNGHS Design Development**

SHWGROUP
ARCHITECTS | ENGINEERS | PLANNERS



GMS Scope/Budget

GROVES MIDDLE SCHOOL

Design Development - Estimate of Probable Cost

Cost Summary	SF
Site Work	129,067
New Exterior Spaces & Canopies	6,425
Subtotal	135,492
New Interior Spaces	137,280
Renovated Interior Spaces	8,120
TOTAL BASE PROJECT	

Worst Case		Most Likely		Best Case	
\$35	\$4,509,305	\$30	\$3,911,044	\$26	\$3,357,970
\$35	224,875	\$30	192,750	\$25	160,625
	4,734,180		4,103,794		3,518,595
\$131	\$18,051,358	\$126	\$17,364,958	\$121	\$16,678,559
\$125	\$1,015,000	\$120	\$974,400	\$115	\$933,800
	\$23,800,538		\$22,443,152		\$21,130,954

Budget	\$21,907,596	\$21,907,596	\$21,907,596
Delta	\$1,892,942	\$535,556	(\$776,642)
	8.64%	2.44%	-3.55%

Demolition Cost	75,595
TOTAL BASE PROJECT + DEMOLITION	

\$5	\$377,975	\$4	\$302,380	\$3	\$226,785
	\$24,178,513		\$22,745,532		\$21,357,739

Budget	\$22,409,736	\$22,409,736	\$22,409,736
Delta	\$1,768,777	\$335,796	(\$1,051,997)
	7.89%	1.50%	-4.69%

– Project appears to remain on budget!



Port Neches – Groves Independent School District
GMS, PNMS, PNGHS Design Development

SHWGROUP
 ARCHITECTS | ENGINEERS | PLANNERS



Port Neches Middle School

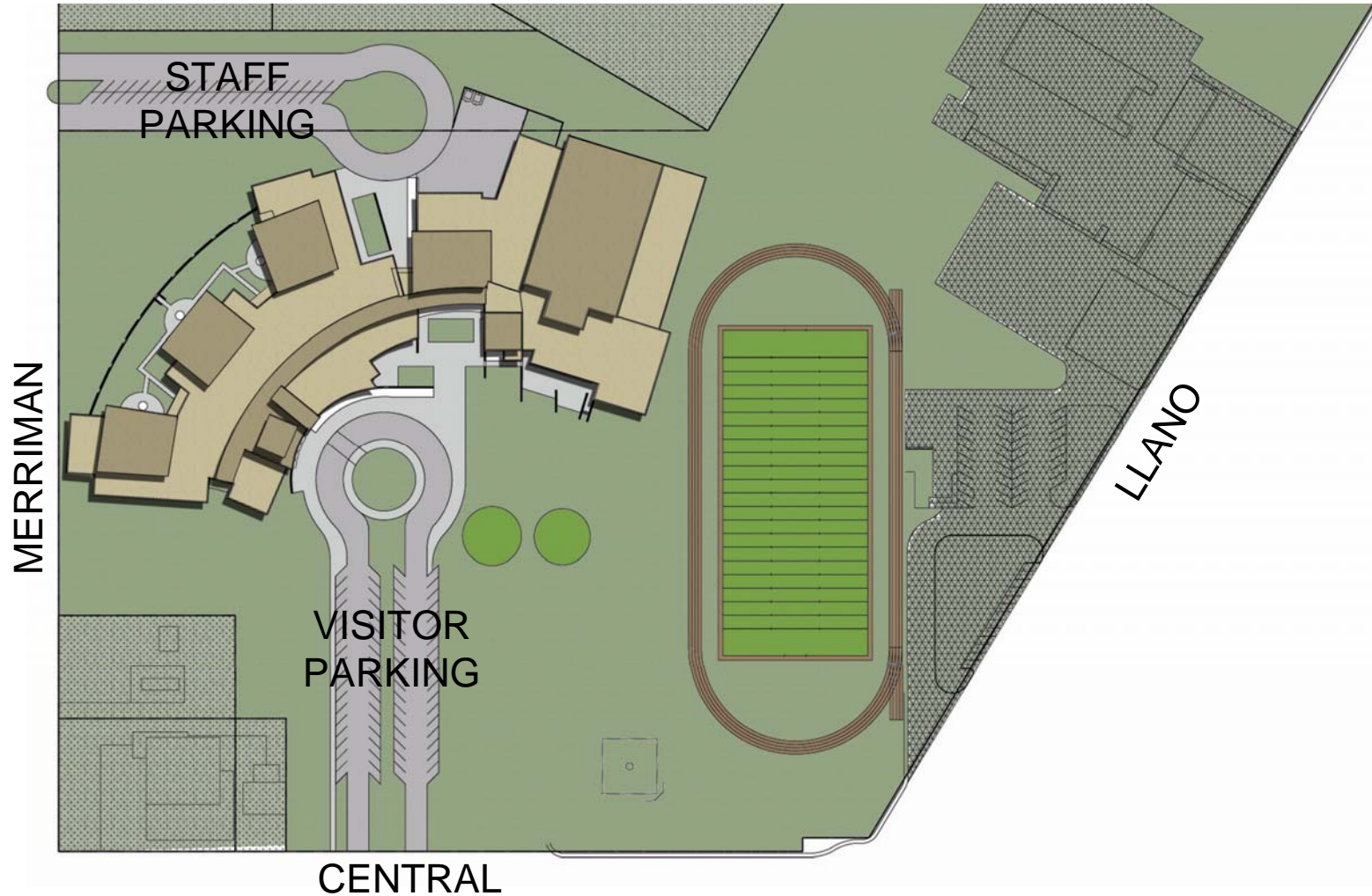


**Port Neches – Groves Independent School District
GMS, PNMS, PNGHS Design Development**

SHWGROUP
ARCHITECTS | ENGINEERS | PLANNERS



Port Neches Middle School



**Port Neches – Groves Independent School District
GMS, PNMS, PNGHS Design Development**

SHWGROUP
ARCHITECTS | ENGINEERS | PLANNERS



Port Neches Middle School



FLOOR PLAN

Port Neches – Groves Independent School District
GMS, PNMS, PNGHS Design Development



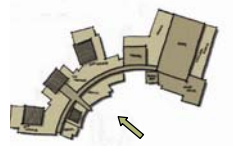
SHWGROUP
ARCHITECTS | ENGINEERS | PLANNERS



Port Neches Middle School



PERSPECTIVE – FRONT



**Port Neches – Groves Independent School District
GMS, PNMS, PNGHS Design Development**



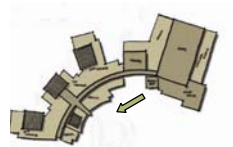
Port Neches Middle School



PERSPECTIVE – LIBRARY



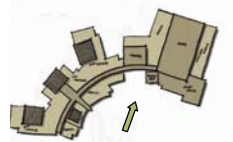
**Port Neches – Groves Independent School District
GMS, PNMS, PNGHS Design Development**



Port Neches Middle School



PERSPECTIVE – FINE ARTS



**Port Neches – Groves Independent School District
GMS, PNMS, PNGHS Design Development**



Port Neches Middle School



PERSPECTIVE – SCIENCE COURTYARD



**Port Neches – Groves Independent School District
GMS, PNMS, PNGHS Design Development**

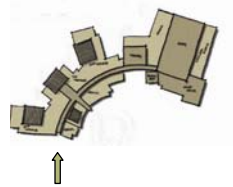
SHWGROUP
ARCHITECTS | ENGINEERS | PLANNERS



Port Neches Middle School



PERSPECTIVE – FROM MERRIMAN



**Port Neches – Groves Independent School District
GMS, PNMS, PNGHS Design Development**

SHWGROUP
ARCHITECTS | ENGINEERS | PLANNERS



Port Neches Middle School



PALETTE – MATERIALS AND COLORS



**Port Neches – Groves Independent School District
GMS, PNMS, PNGHS Design Development**

SHWGROUP
ARCHITECTS | ENGINEERS | PLANNERS



Port Neches Middle School

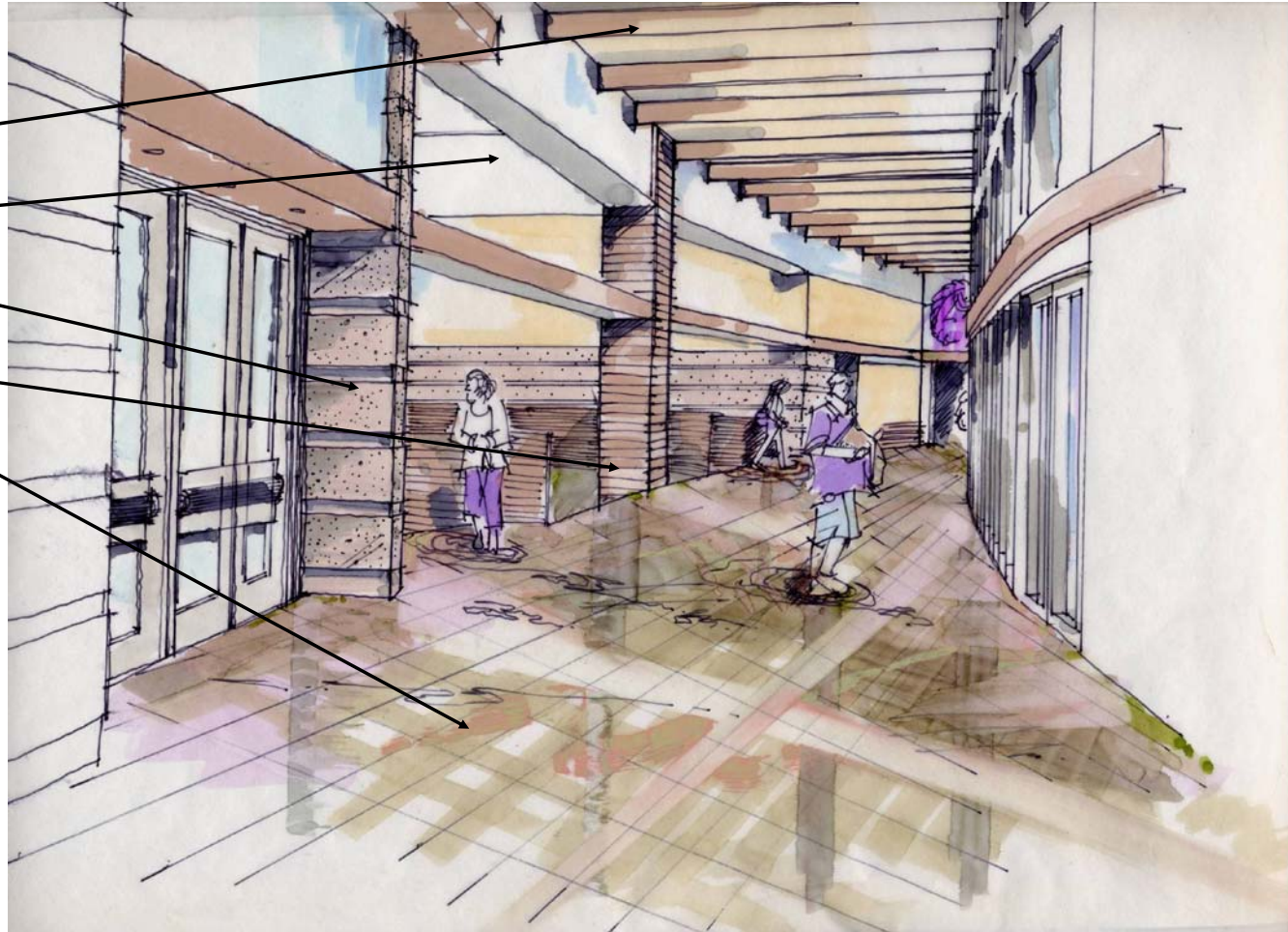
GLUE-LAM WOOD TRUSSES

PAINTED DRYWALL

CONCRETE MASONRY

WOOD SHIPLAP

CERAMIC TILE



PERSPECTIVE – MAIN STREET

Port Neches – Groves Independent School District
GMS, PNMS, PNGHS Design Development



SHWGROUP
ARCHITECTS | ENGINEERS | PLANNERS



Port Neches Middle School

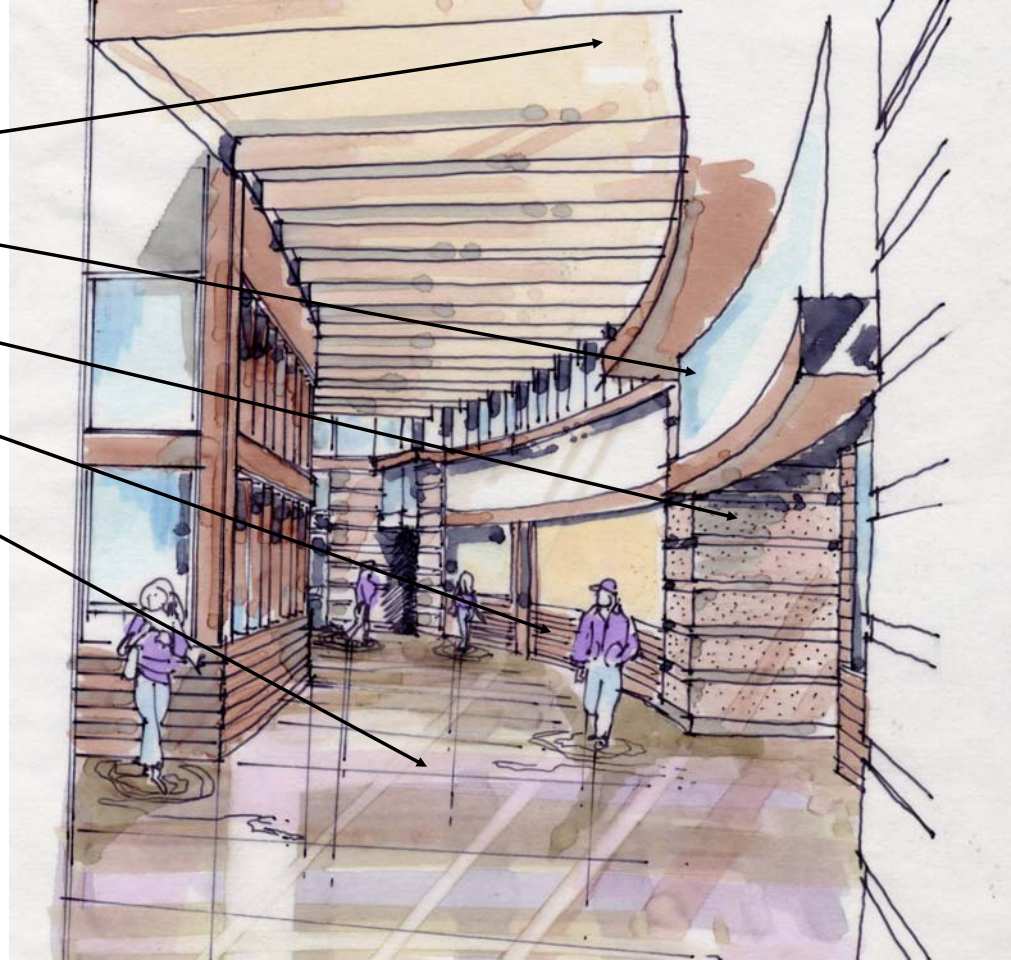
GLUE-LAM WOOD TRUSSES

PAINTED DRYWALL

CONCRETE MASONRY

WOOD SHIPLAP

CERAMIC TILE



PERSPECTIVE – MAIN STREET

**Port Neches – Groves Independent School District
GMS, PNMS, PNGHS Design Development**



SHWGROUP
ARCHITECTS | ENGINEERS | PLANNERS



Port Neches Middle School



THROUGH SECTION – MAIN STREET

Port Neches – Groves Independent School District

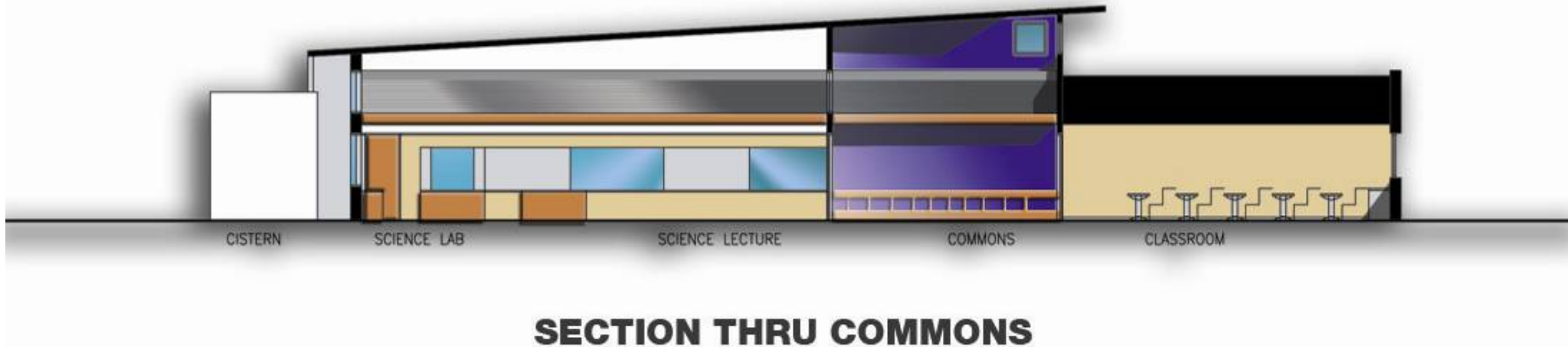
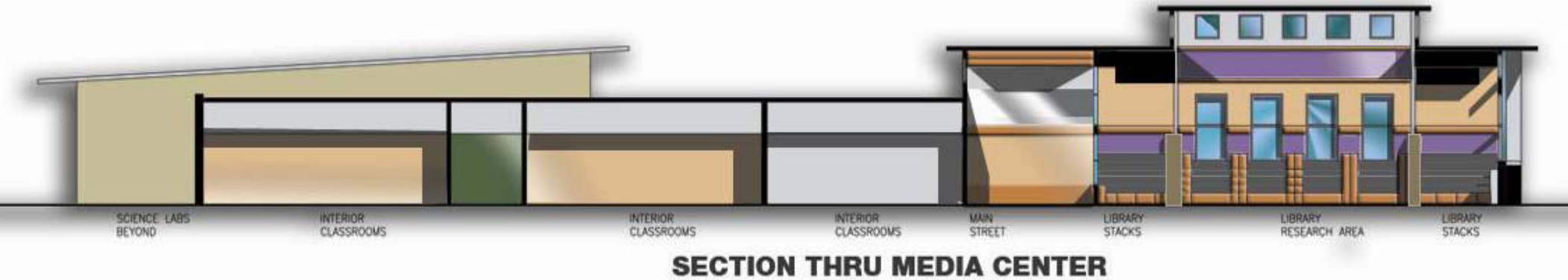
GMS, PNMS, PNGHS Design Development



SHWGROUP
ARCHITECTS | ENGINEERS | PLANNERS



Port Neches Middle School

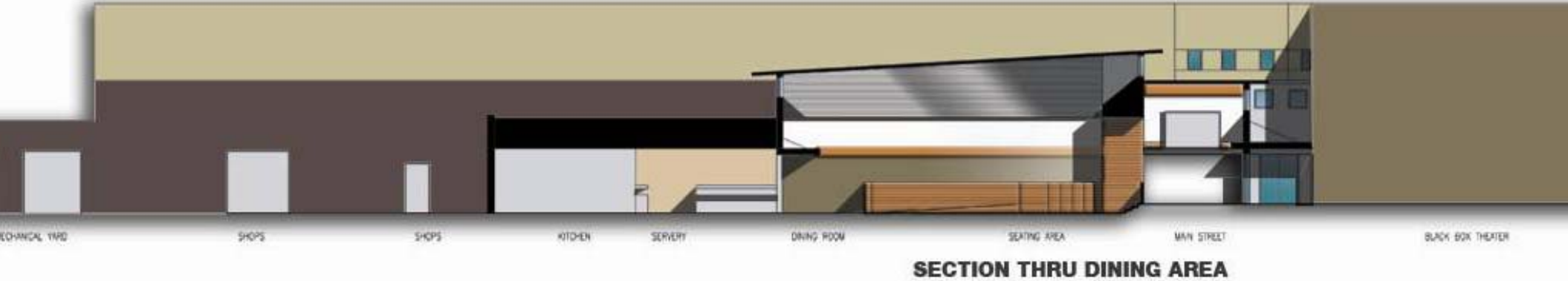


**Port Neches – Groves Independent School District
GMS, PNMS, PNGHS Design Development**

SHWGROUP
ARCHITECTS | ENGINEERS | PLANNERS



Port Neches Middle School



**Port Neches – Groves Independent School District
GMS, PNMS, PNGHS Design Development**



PNMS Scope/Budget

PORT NECHES MIDDLE SCHOOL

Design Development - Estimate of Probable Cost

Cost Summary	SF
Site Work	111,175
New Exterior Spaces & Canopies	3,590
Subtotal	114,765
 New Interior Spaces	 131,980
Renovated Interior Spaces	0
TOTAL BASE PROJECT	

Worst Case		Most Likely		Best Case	
\$38	\$4,261,325	\$33	\$3,712,660	\$29	\$3,199,450
\$35	125,650	\$30	107,700	\$25	89,750
	4,386,975		3,820,360		3,289,200
\$131	\$17,223,540	\$126	\$16,563,640	\$121	\$15,903,740
	\$0		\$0		\$0
	\$21,610,515		\$20,384,000		\$19,192,940

Budget	\$20,717,827	\$20,717,827	\$20,717,827
Delta	\$892,688	(\$333,827)	(\$1,524,887)
	4.31%	-1.61%	-7.36%

Demolition Cost	84,815
TOTAL BASE PROJECT + DEMOLITION	

\$5	\$424,075	\$4	\$339,260	\$3	\$254,445
	\$22,034,590		\$20,723,260		\$19,447,385

Budget	\$21,185,454	\$21,185,454	\$21,185,454
Delta	\$849,136	(\$462,194)	(\$1,738,069)
	4.01%	-2.18%	-8.20%

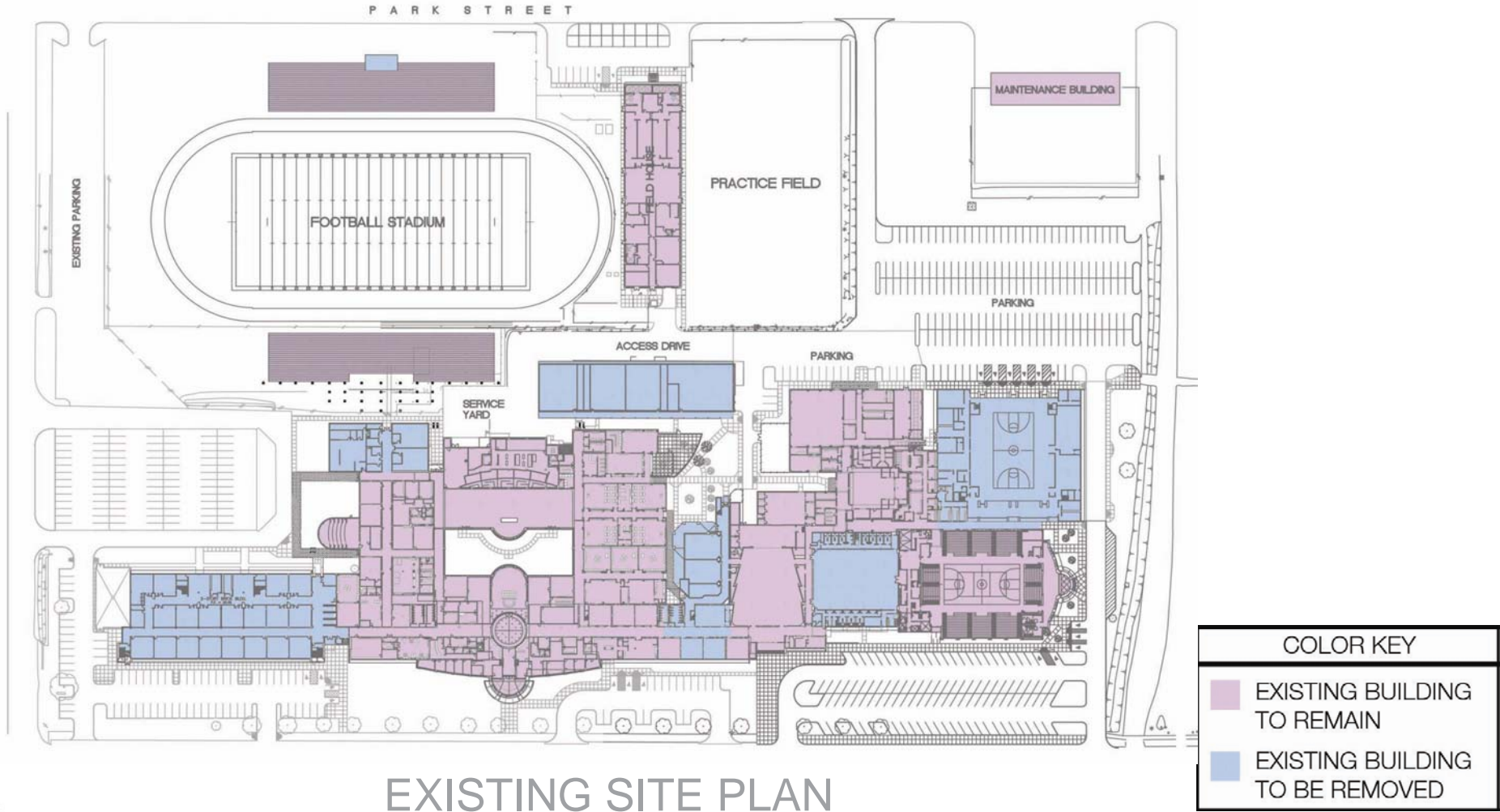
– Project appears to remain on budget!



Port Neches – Groves Independent School District
GMS, PNMS, PNGHS Design Development



Port Neches – Groves High School

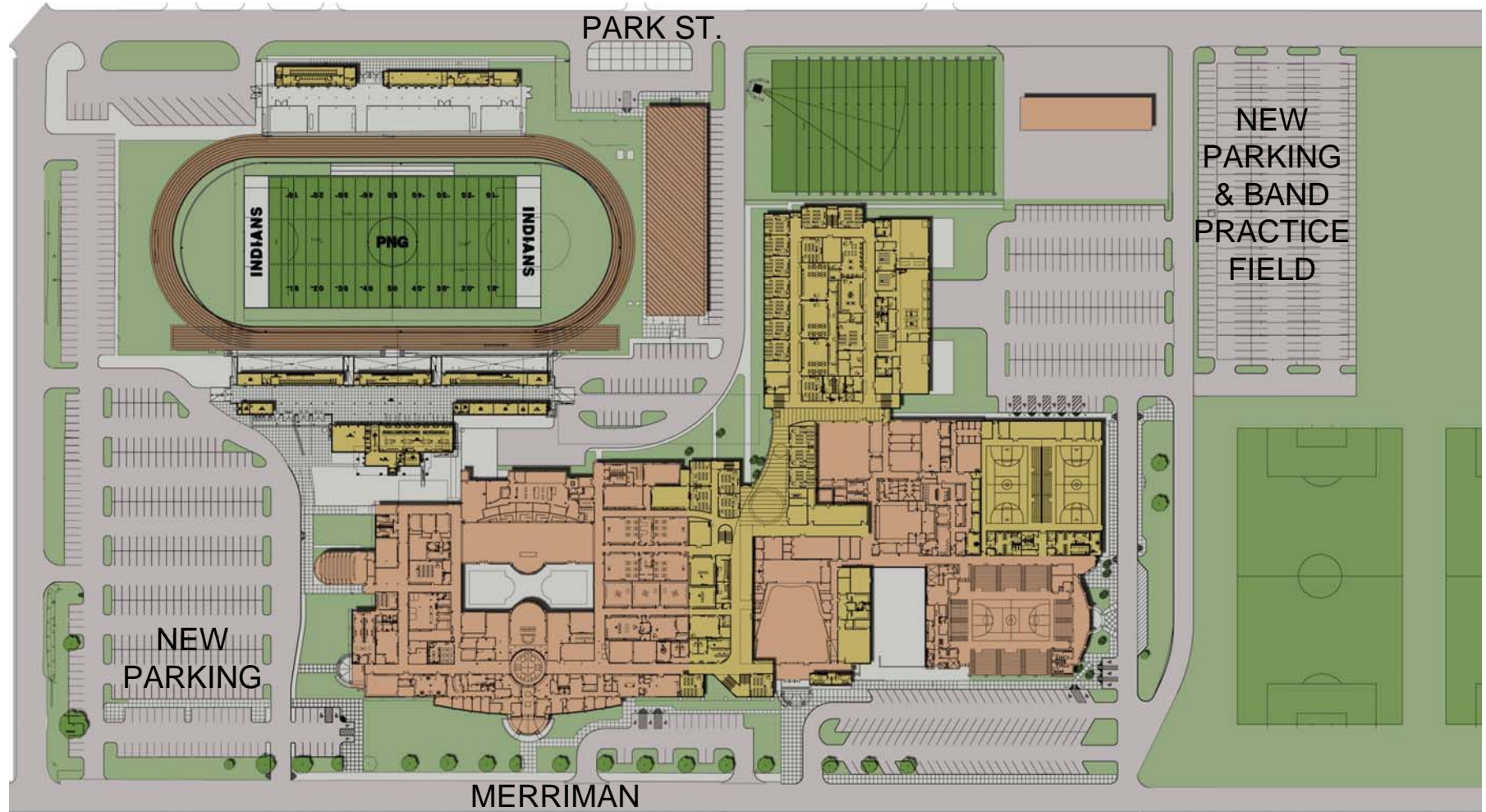


EXISTING SITE PLAN

**Port Neches – Groves Independent School District
GMS, PNMS, PNGHS Design Development**



Port Neches – Groves High School



SITE PLAN

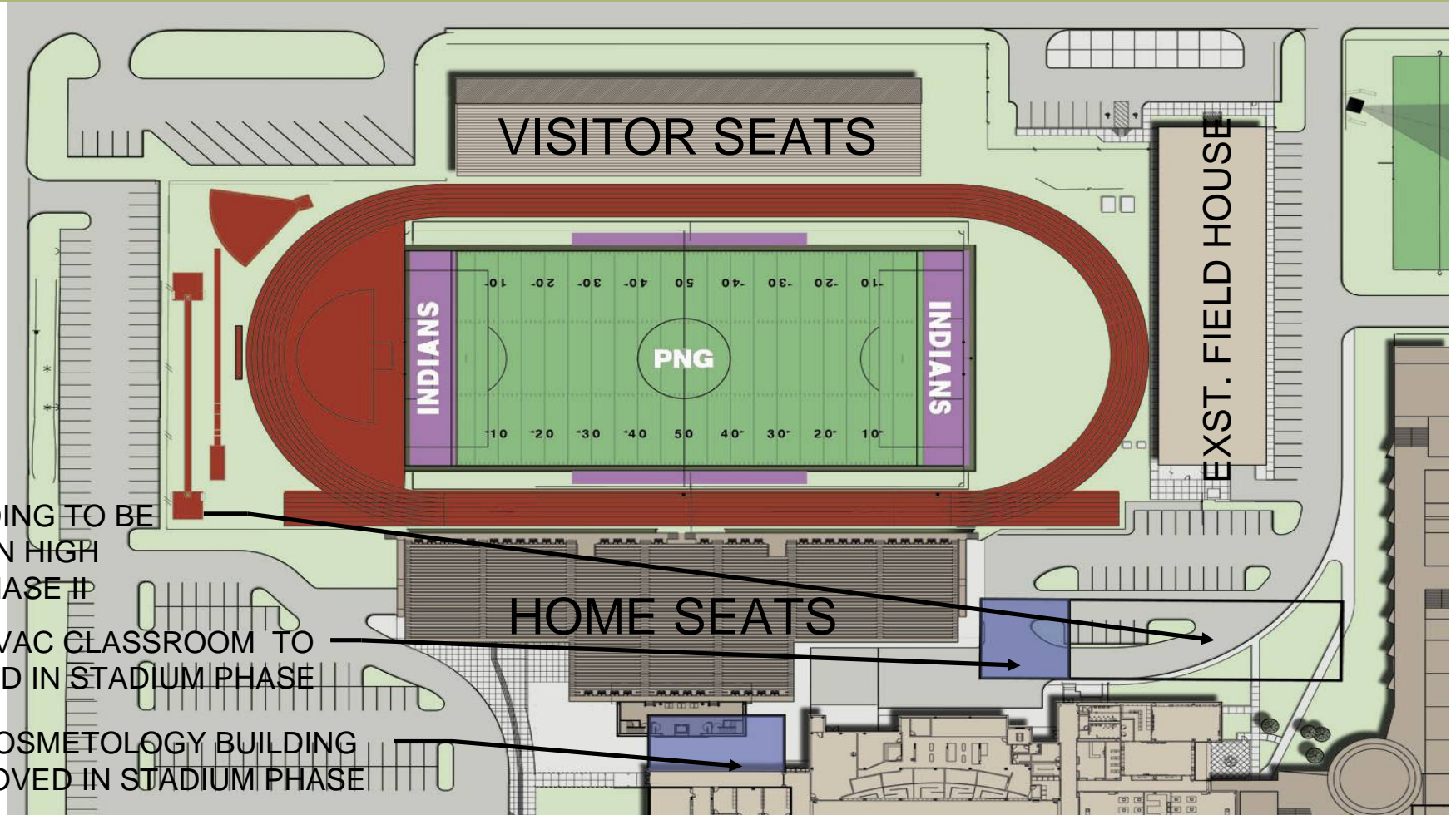
**Port Neches – Groves Independent School District
GMS, PNMS, PNGHS Design Development**



SHWGROUP
ARCHITECTS | ENGINEERS | PLANNERS



PN-G Stadium Renovations

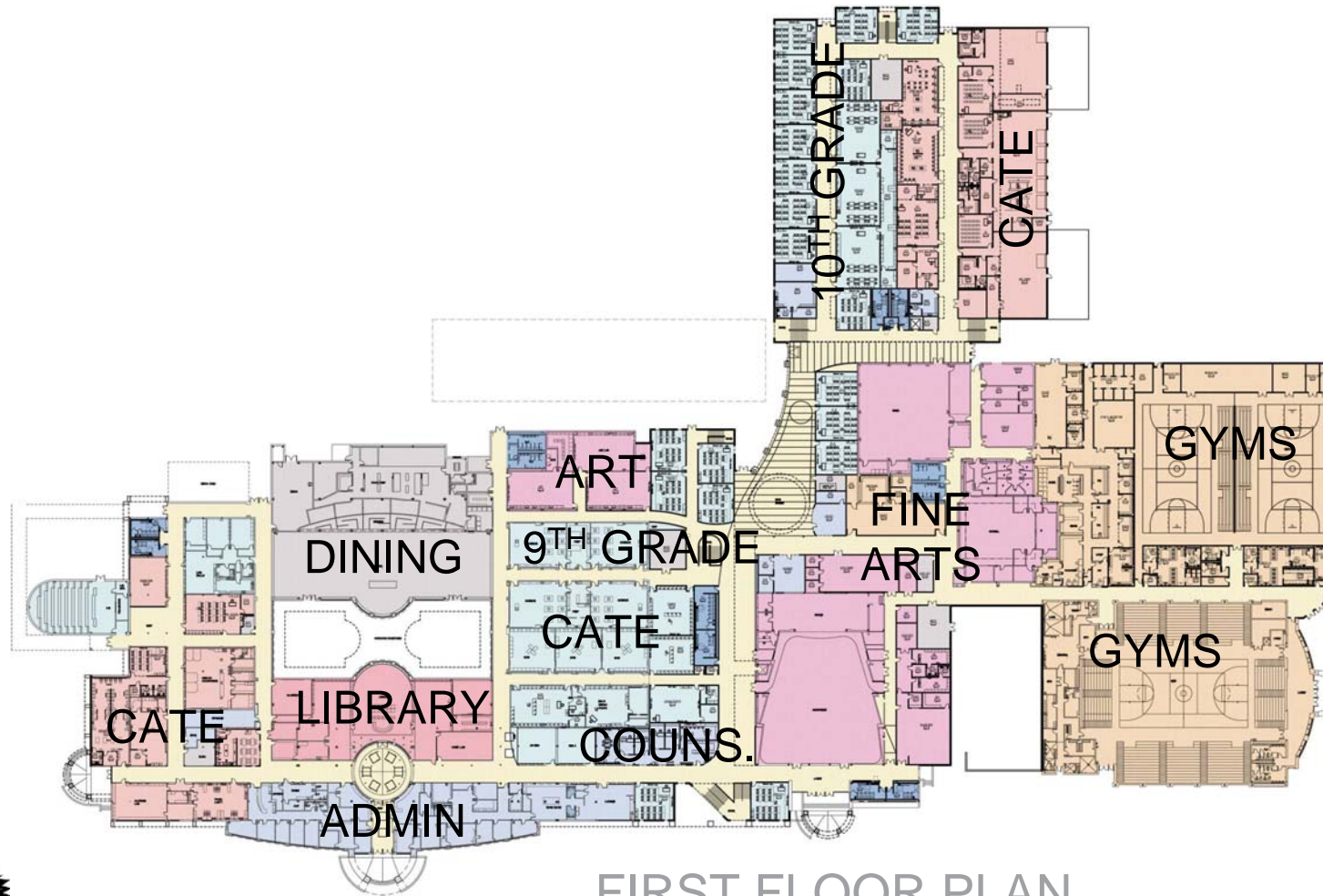


**Port Neches – Groves Independent School District
GMS, PNMS, PNGHS Design Development**

SHWGROUP
ARCHITECTS | ENGINEERS | PLANNERS



Port Neches – Groves High School

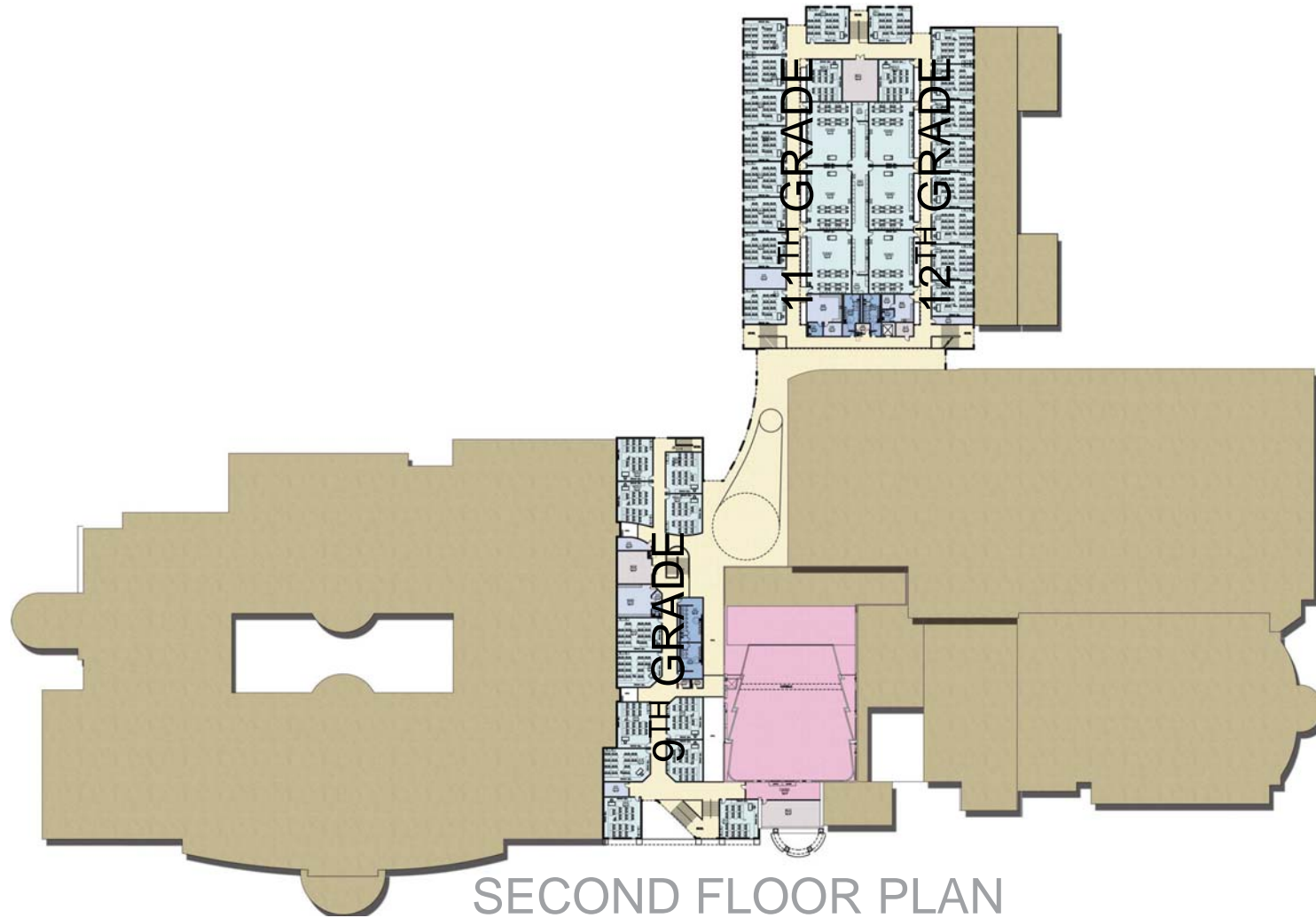


FIRST FLOOR PLAN

**Port Neches – Groves Independent School District
GMS, PNMS, PNGHS Design Development**



Port Neches – Groves High School

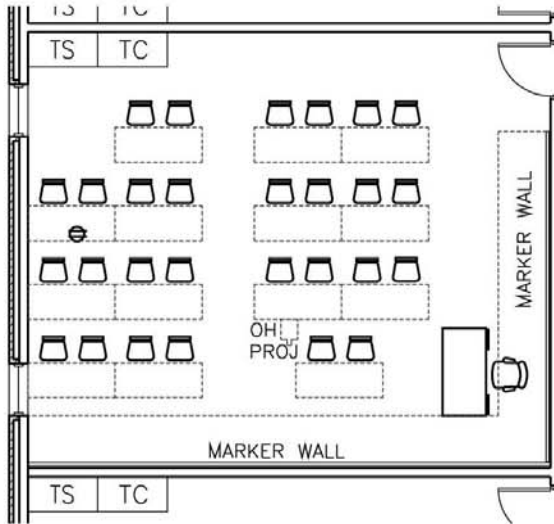


SECOND FLOOR PLAN

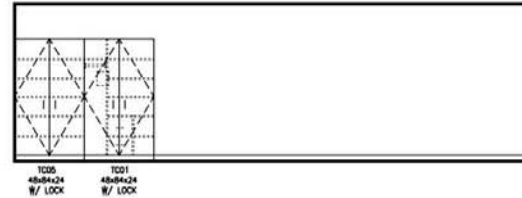
**Port Neches – Groves Independent School District
GMS, PNMS, PNGHS Design Development**



Port Neches – Groves High School



01 **TYPICAL CLASSROOM LAYOUT**
SCALE: 1/8" = 1'-0"



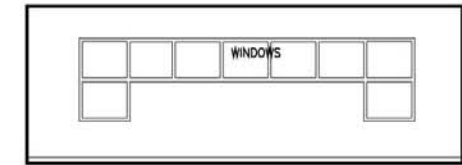
TYPICAL CLASSROOM ELEVATION



TYPICAL CLASSROOM TEACHING WALL



TYPICAL CLASSROOM ELEVATION



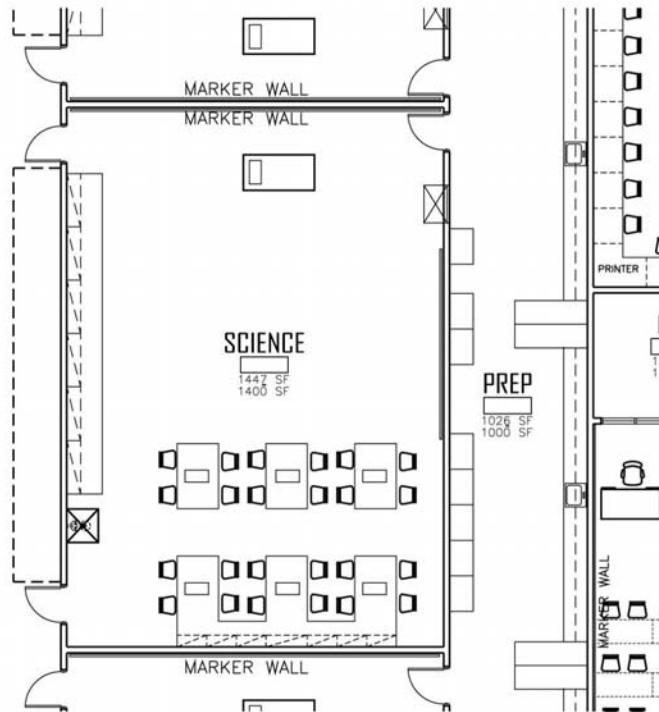
TYPICAL CLASSROOM ELEVATION



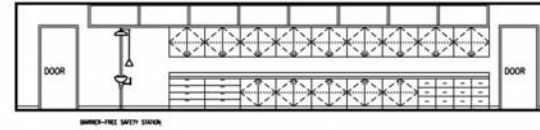
TYPICAL CLASSROOM
Port Neches – Groves Independent School District
GMS, PNMS, PNGHS Design Development



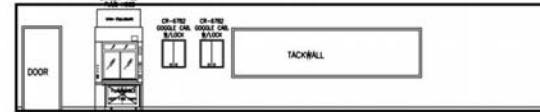
Port Neches – Groves High School



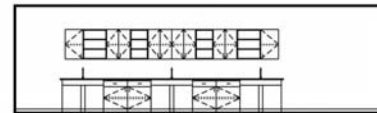
01 TYPICAL SCIENCE CLASSROOM LAYOUT
SCALE: 1/8" = 1'-0"



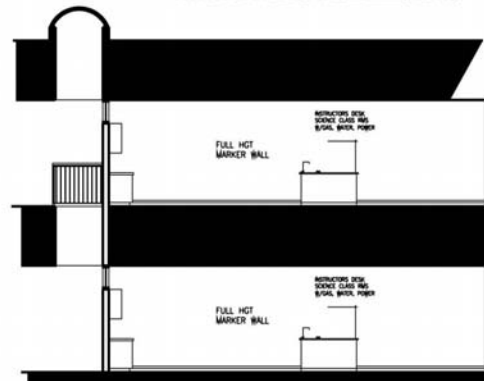
TYPICAL SCIENCE CLASSROOM ELEVATION



TYPICAL SCIENCE CLASSROOM ELEVATION



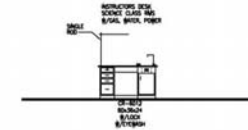
TYPICAL STUDENT TABLE ELEVATION



SECTION THROUGH SCIENCE CLASSROOMS



NOTE: TYPICAL PERIMETER LABORATORY TABLE CR-BANDS, REF. SPEC. FOR TYP. EDG.



INSTRUCTORS DESK ELEVATION



Port Neches – Groves Independent School District

GMS, PNMS, PNGHS Design Development

SHWGROUP
ARCHITECTS | ENGINEERS | PLANNERS



Port Neches – Groves High School



PALETTE – MATERIALS AND COLORS

**Port Neches – Groves Independent School District
GMS, PNMS, PNGHS Design Development**



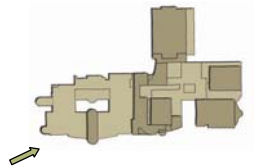
Port Neches – Groves High School



OVERALL PERSPECTIVE



**Port Neches – Groves Independent School District
GMS, PNMS, PNGHS Design Development**



SHWGROUP
ARCHITECTS | ENGINEERS | PLANNERS



Port Neches – Groves High School



PERSPECTIVE – AUDITORIUM ENTRY



**Port Neches – Groves Independent School District
GMS, PNMS, PNGHS Design Development**



SHWGROUP
ARCHITECTS | ENGINEERS | PLANNERS



Port Neches – Groves High School



PERSPECTIVE - GYMS



**Port Neches – Groves Independent School District
GMS, PNMS, PNGHS Design Development**



Port Neches – Groves High School



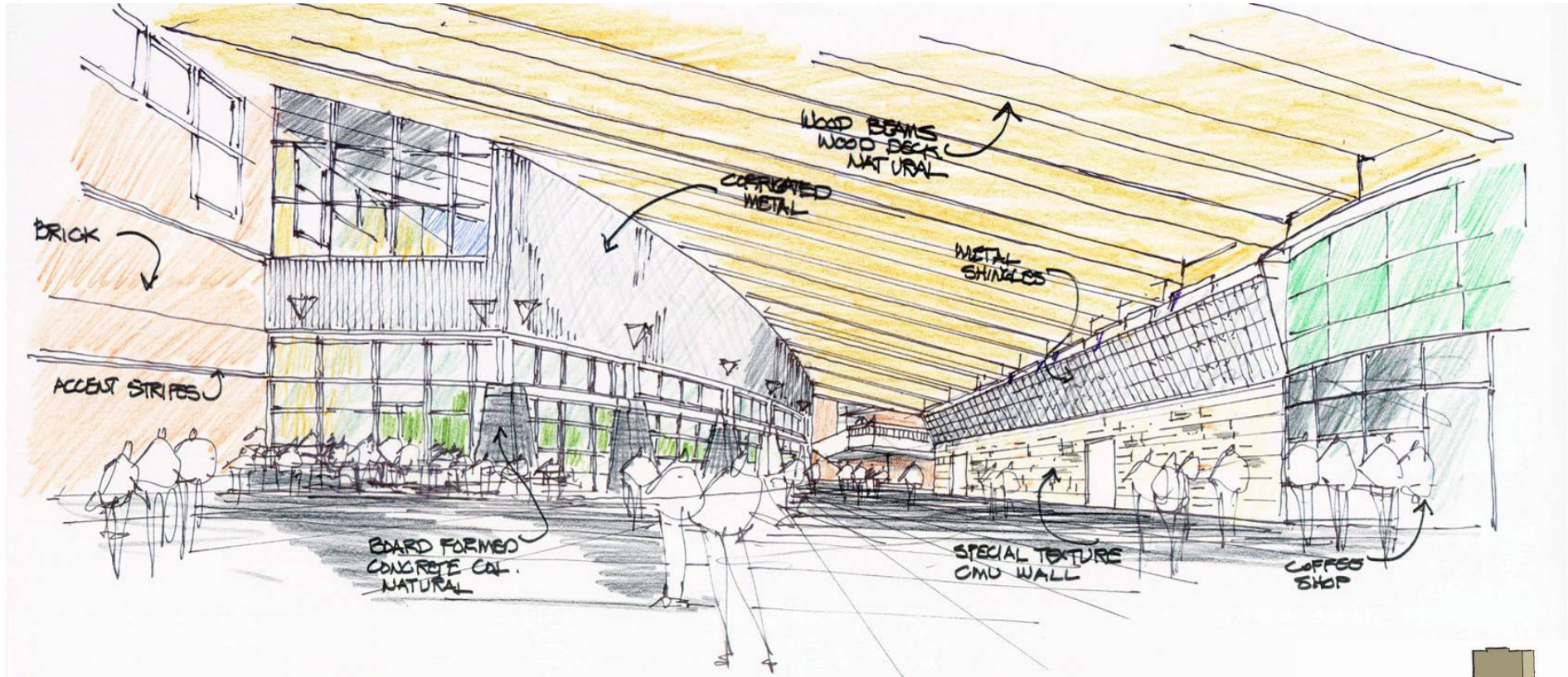
PERSPECTIVE – ACADEMIC WING



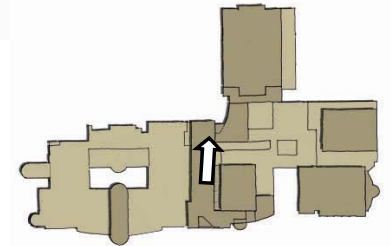
**Port Neches – Groves Independent School District
GMS, PNMS, PNGHS Design Development**



Port Neches – Groves High School



INTERIOR SKETCH

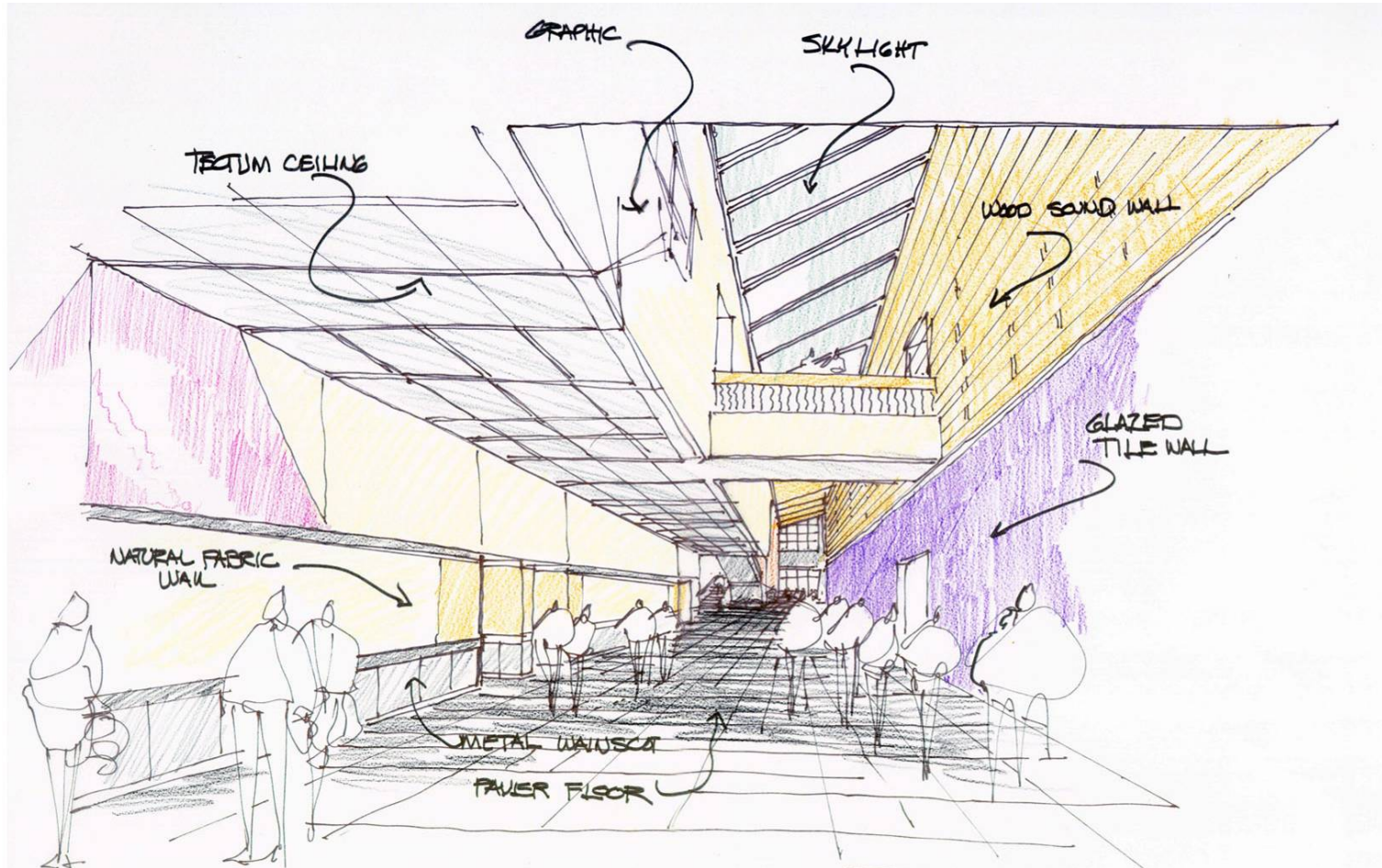


Port Neches – Groves Independent School District
GMS, PNMS, PNGHS Design Development

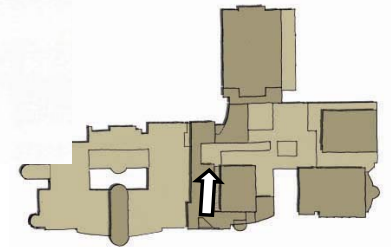
SHWGROUP
ARCHITECTS | ENGINEERS | PLANNERS



Port Neches – Groves High School



INTERIOR SKETCH

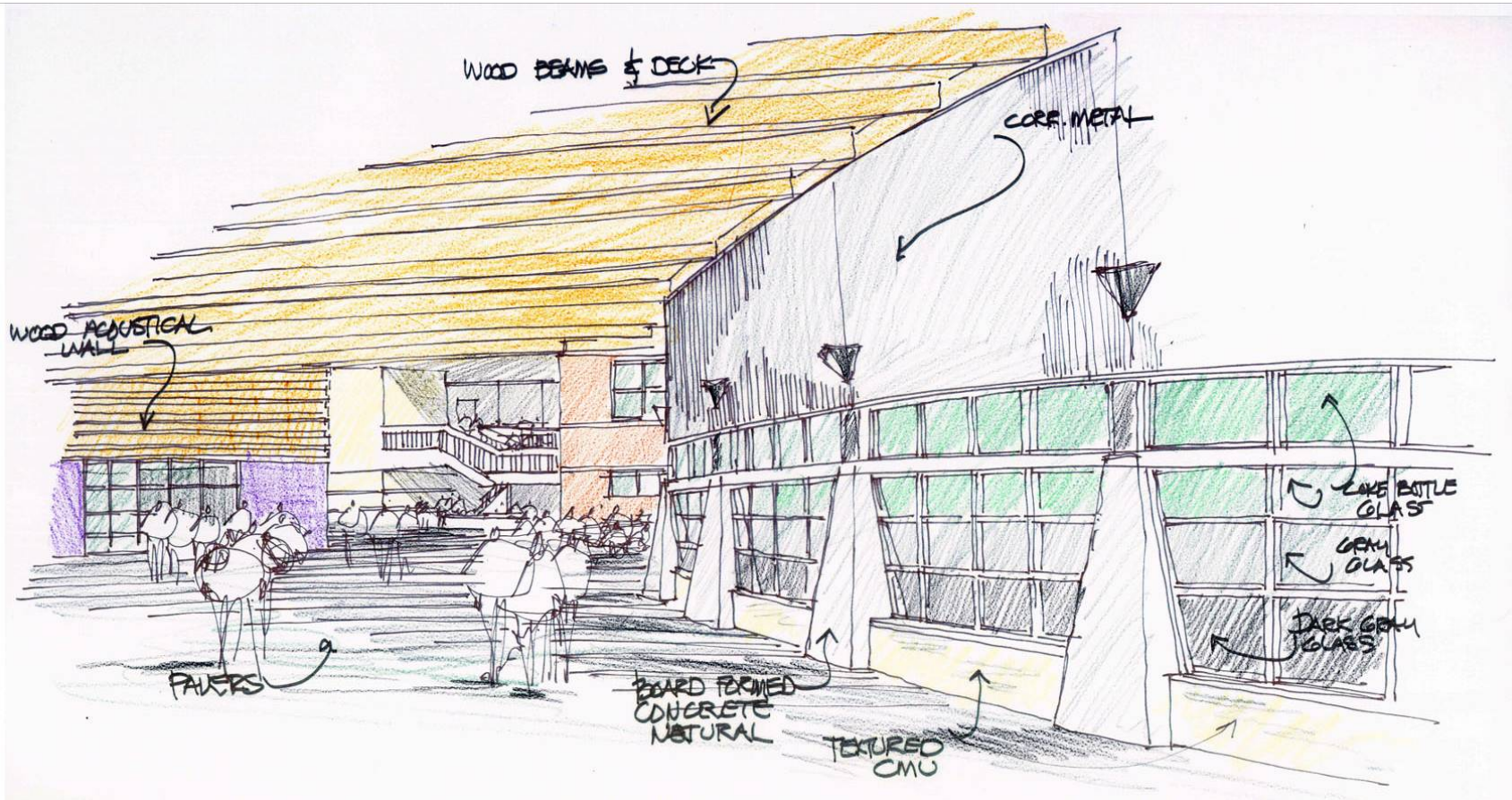


**Port Neches – Groves Independent School District
GMS, PNMS, PNGHS Design Development**

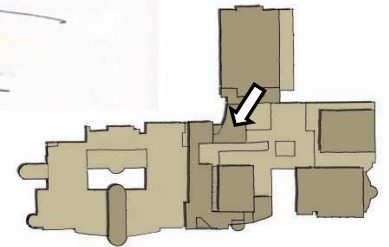
SHWGROUP
ARCHITECTS | ENGINEERS | PLANNERS



Port Neches – Groves High School



INTERIOR SKETCH

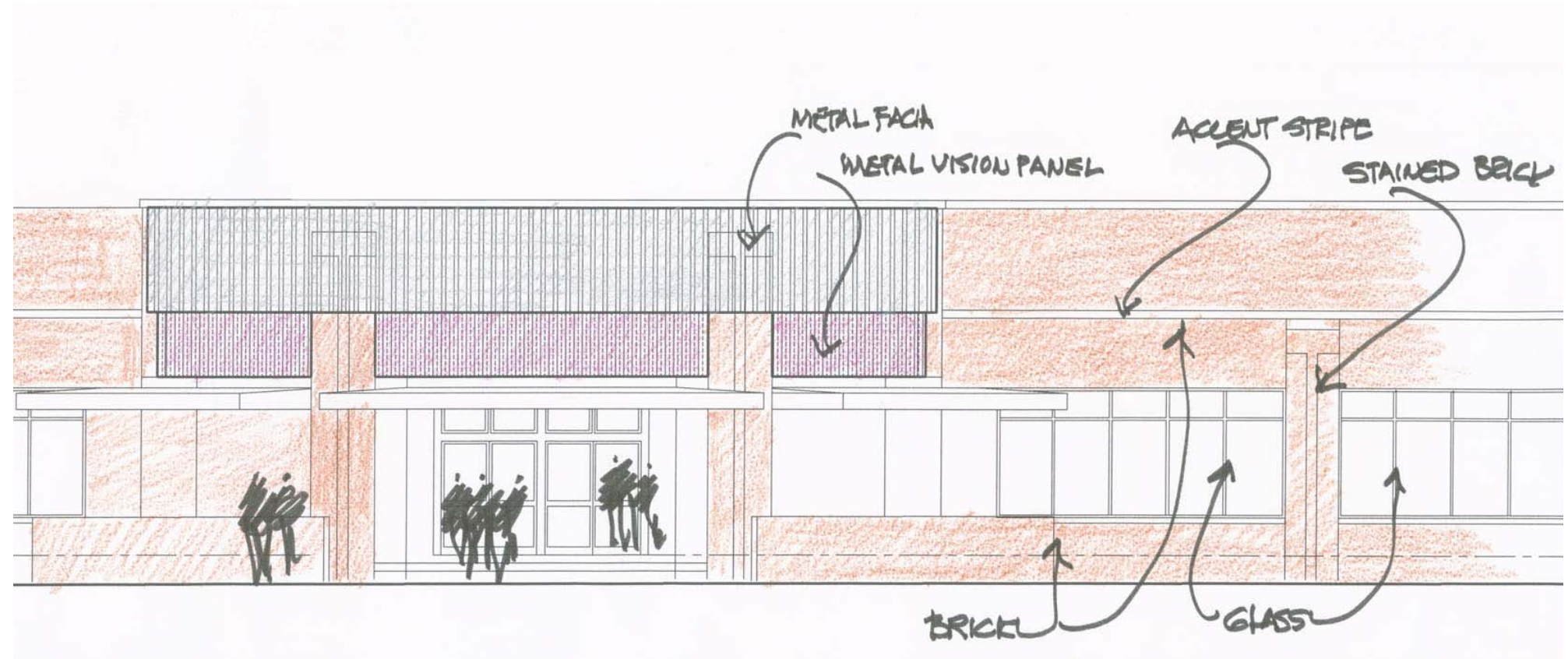


**Port Neches – Groves Independent School District
GMS, PNMS, PNGHS Design Development**

SHWGROUP
ARCHITECTS | ENGINEERS | PLANNERS



Port Neches – Groves High School

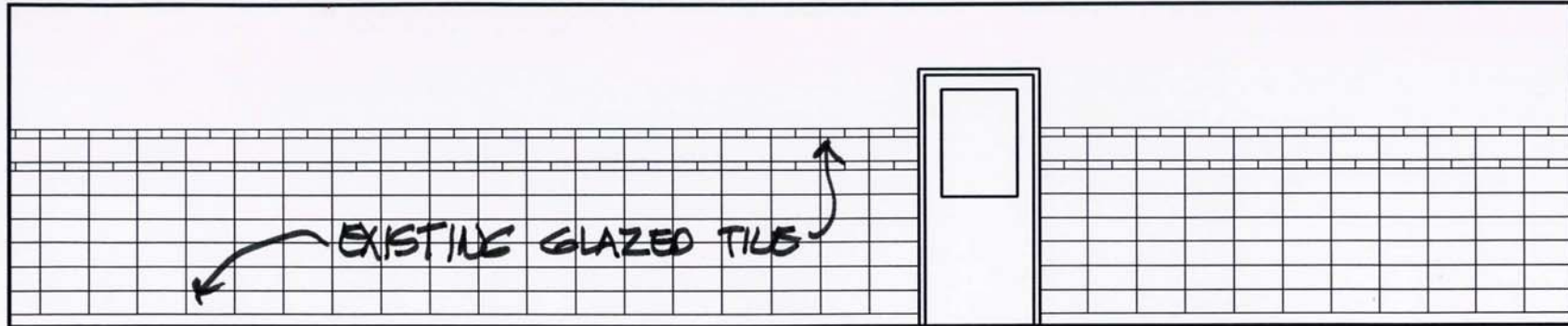


EXTERIOR ELEVATION

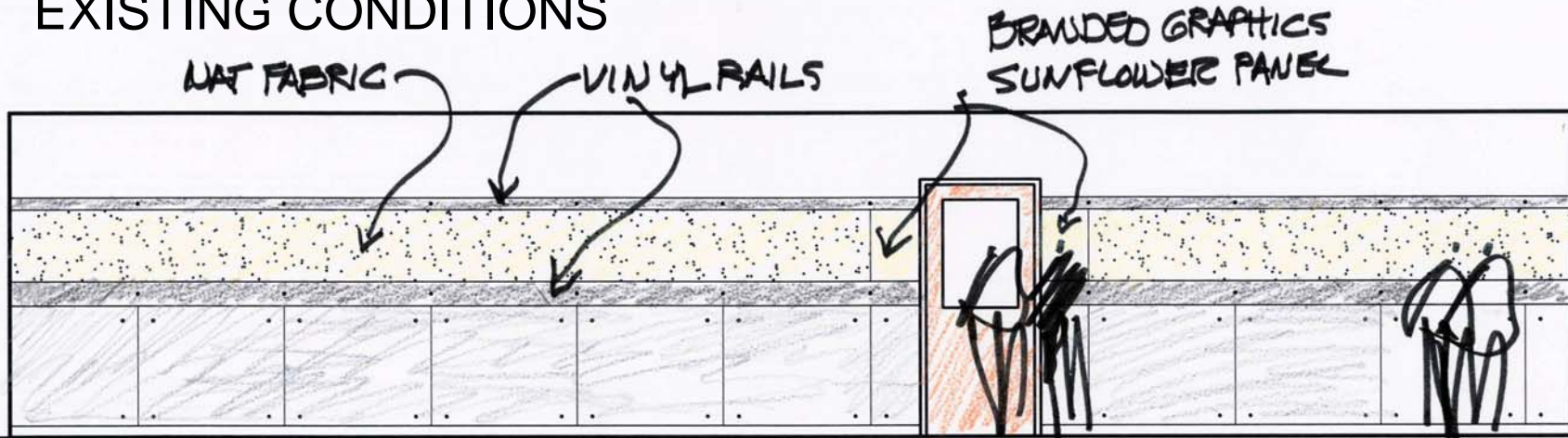
**Port Neches – Groves Independent School District
GMS, PNMS, PNGHS Design Development**



Port Neches – Groves High School



EXISTING CONDITIONS



NEW HALLWAYS

INTERIOR ELEVATION

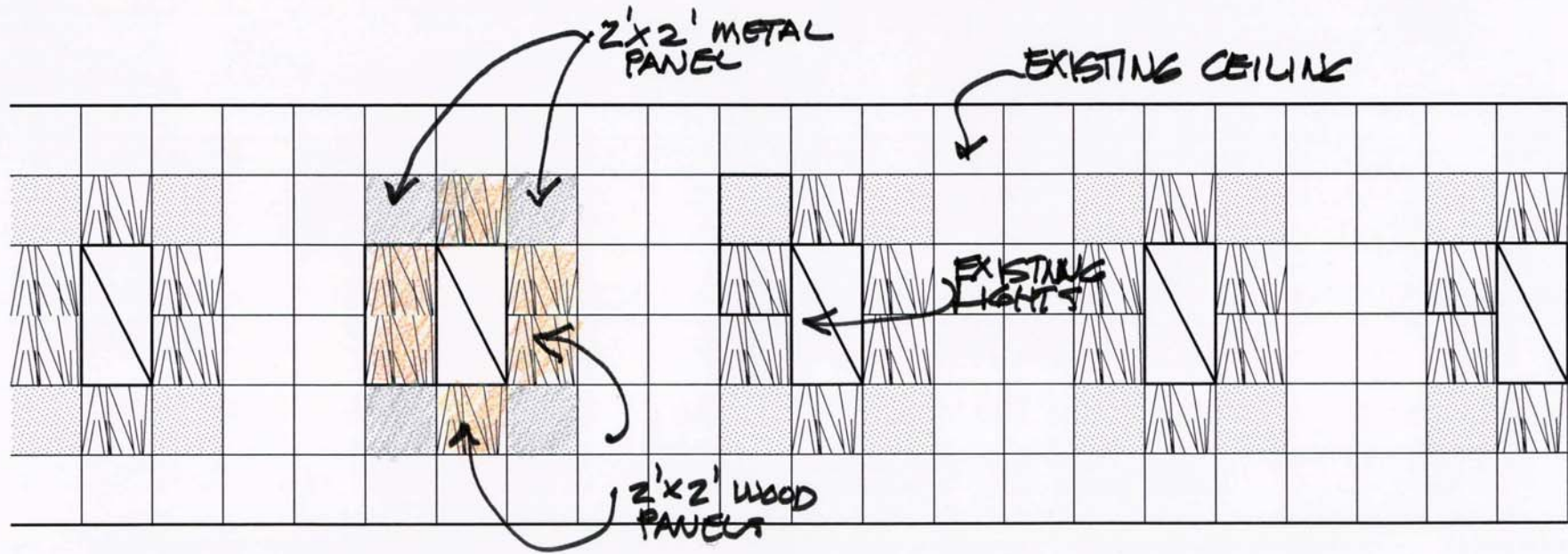


Port Neches – Groves Independent School District
GMS, PNMS, PNGHS Design Development

SHWGROUP
ARCHITECTS | ENGINEERS | PLANNERS



Port Neches – Groves High School



EXISTING BUILDING - CEILING WORK

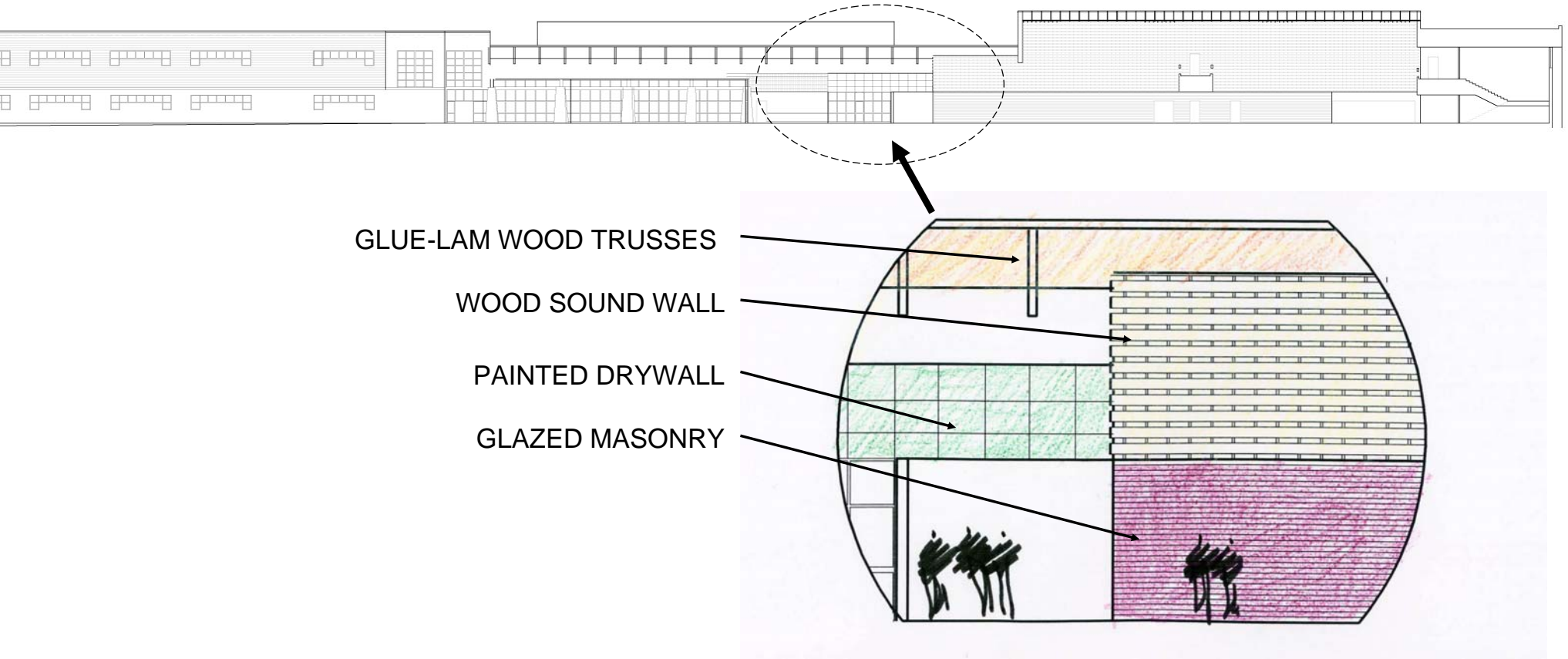


**Port Neches – Groves Independent School District
GMS, PNMS, PNGHS Design Development**

SHWGROUP
ARCHITECTS | ENGINEERS | PLANNERS



Port Neches – Groves High School

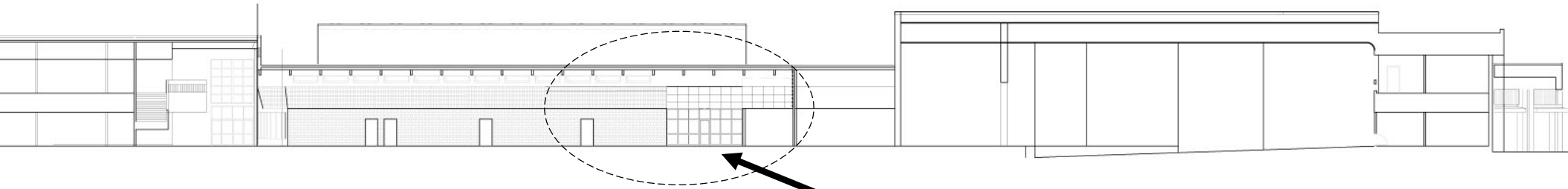


INTERIOR ELEVATIONS

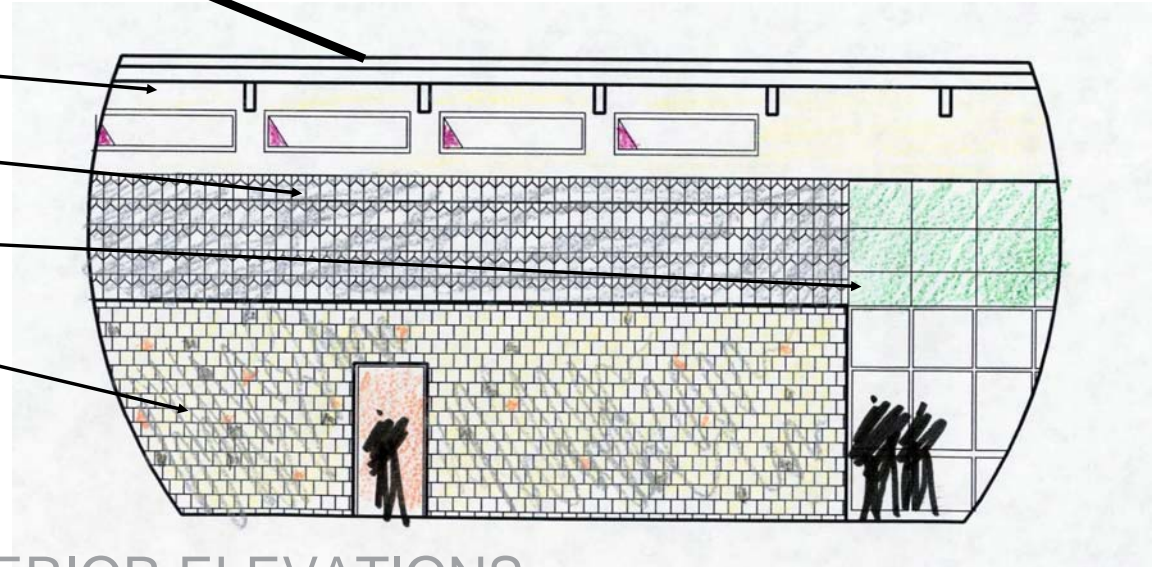
**Port Neches – Groves Independent School District
GMS, PNMS, PNGHS Design Development**



Port Neches – Groves High School



GLUE-LAM WOOD TRUSSES
PRESSED GALVANIZED METAL
PAINTED DRYWALL
TEXTURED CONCRETE MASONRY



INTERIOR ELEVATIONS

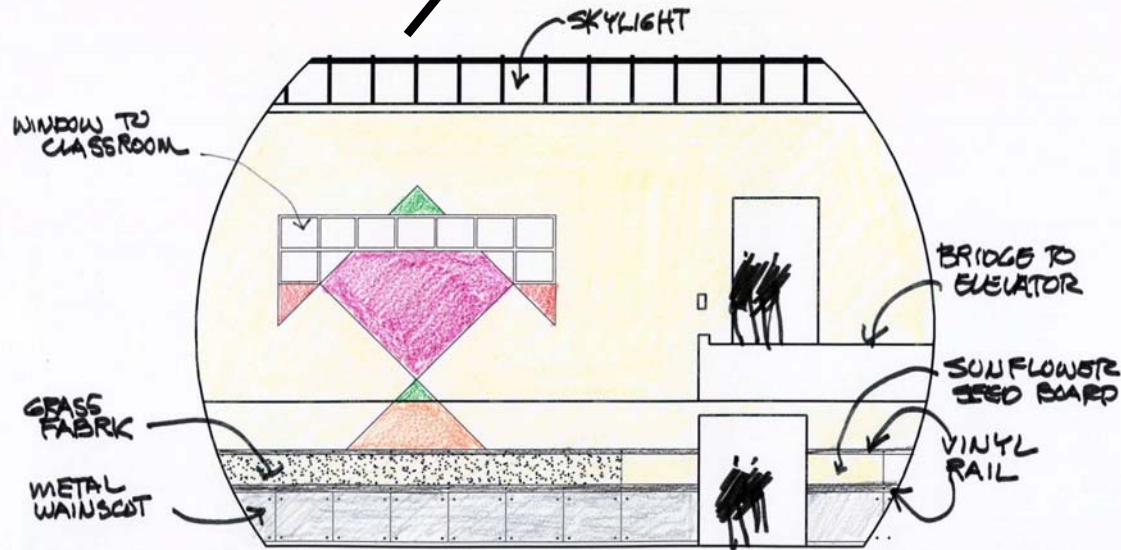
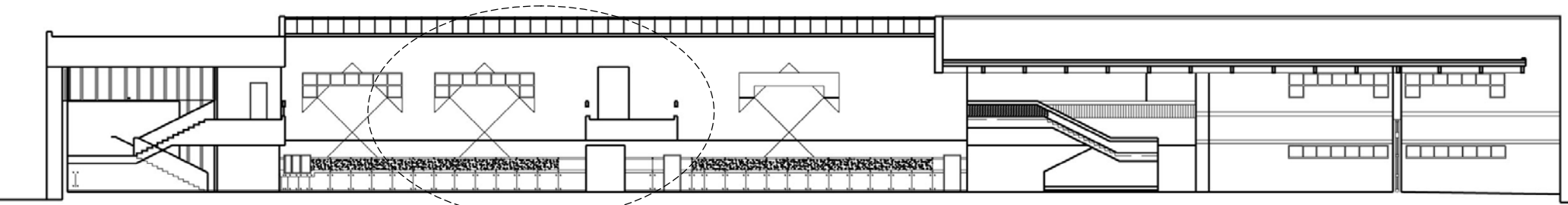


**Port Neches – Groves Independent School District
GMS, PNMS, PNGHS Design Development**

SHWGROUP
ARCHITECTS | ENGINEERS | PLANNERS



Port Neches – Groves High School



INTERIOR ELEVATIONS

**Port Neches – Groves Independent School District
GMS, PNMS, PNGHS Design Development**



High School Scope/Budget

PORT NECHES-GROVES HIGH SCHOOL

Design Development - Estimate of Probable Cost

Cost Summary	SF
Site Work	296,424
New Exterior Spaces & Canopies	
Subtotal	296,424
New Interior Spaces	174,260
Renovated Interior Spaces	21,920
TOTAL BASE PROJECT	

Worst Case		Most Likely		Best Case	
\$24	\$7,113,910	\$20	\$5,992,928	\$17	\$5,128,790
	3,947,475		3,576,250		3,205,025
	11,061,385		9,569,178		8,333,815
\$129	\$22,435,225	\$124	\$21,563,925	\$119	\$20,692,625
\$148	\$3,250,100	\$143	\$3,140,500	\$138	\$3,030,900
	\$36,746,710		\$34,273,603		\$32,057,340

Budget	\$35,495,460	\$35,495,460	\$35,495,460
Delta	\$1,251,250	(\$1,221,857)	(\$3,438,120)
	3.53%	-3.44%	-9.69%

Demolition Cost	153,960
TOTAL BASE PROJECT + DEMOLITION	

\$5	\$769,800	\$4	\$615,840	\$3	\$461,880
	\$37,516,510		\$34,889,443		\$32,519,220
Budget	\$35,495,460	\$35,495,460	\$35,495,460		
Delta	\$2,021,050	(\$606,017)	(\$2,976,240)		
	5.69%	-1.71%	-8.38%		

– Project appears to remain on budget!



Port Neches – Groves Independent School District
GMS, PNMS, PNGHS Design Development

SHWGROUP
 ARCHITECTS | ENGINEERS | PLANNERS



Conclusion

- Looking for approval for DD
 - Next step will be to continue to develop the contract documents
 - Drawings
 - Specifications
- PN-G continues to be a pleasure to work with
- We appreciate your continued involvement and passion
- Thank you!



Port Neches – Groves Independent School District
GMS, PNMS, PNGHS Design Development

SHWGROUP
ARCHITECTS | ENGINEERS | PLANNERS

